

Anti-Hsp90 beta Rabbit antibody



Catalog Number: 167755

Product name

Anti-Hsp90 beta Rabbit antibody

Specificity

Human, Mouse, Rat

Antibody description

Hsp90 beta Rabbit monoclonal antibody

Preparation

Antigen: A synthetic peptide of human Hsp90 beta

Formulation

50nM Tris-Glycine(pH 7.4), 0.15M NaCl,
40%Glycerol, 0.01% sodium azide and 0.05% BSA

Storage

Store at 4°C short term. Store at -20°C long term.
Avoid freeze / thaw cycle.

Clonality

Monoclonal

Ig Type

Rabbit IgG

Applications

WB, IHC-P, ICC/IF

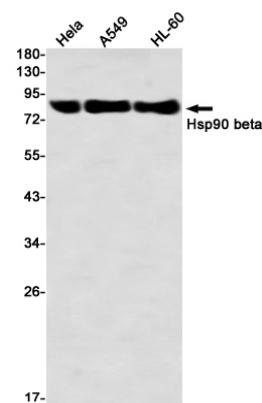
Dilutions

WB: 1/2000-1/10000

IHC: 1/30

ICC/IF: 1/20

Validations



Western blot detection of Hsp90 beta in HeLa,A549,HL-60 using Hsp90 beta Rabbit mAb(1:1000 diluted)