

General Information

Gene Name Synonym

Notch 2; hN2 [Cleaved into: Notch 2 extracellular truncation; N2ECD; Notch 2 intracellular domain; N2ICD]

Protein Construction

A DNA sequence encoding the human NOTCH2 (NP_001186930.1) (Met1-Gln530) was expressed with a polyhistidine tag at the C-terminus.

Organism

Human

Expression Host

Baculovirus-Insect Cells

QC Testing

Purity

> 95 % as determined by SDS-PAGE.

Endotoxin

< 1.0 EU per μg protein as determined by the LAL method.

Stability

Samples are stable for up to twelve months from date of receipt at -70°C

Predicted N terminal

Leu 26

Molecular Mass

The recombinant human NOTCH2 consists of 516 amino acids and predicts a molecular mass of 55.5 kDa.

Formulation

Lyophilized from sterile 20 mM Tris, 500 mM NaCl, 10 % gly, pH 8.0.

1. Normally 5 % - 8 % trehalose, mannitol and 0.01% Tween80 are added as protectants before lyophilization. Specific concentrations are included in the hardcopy of COA.

2. Please contact us for any concerns or special requirements.

Usage Guide

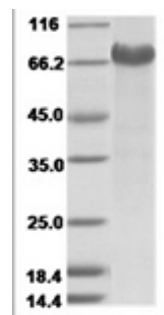
Storage

Store it under sterile conditions at -20°C to -80°C . It is recommended that the protein be aliquoted for optimal storage. Avoid repeated freeze-thaw cycles.

Reconstitution

A hardcopy of COA with reconstitution instruction is sent along with the products. Please refer to it for detailed information.

SDS-PAGE



Human Notch-2 Protein 15488