

ILVBL antibody



Catalog Number: 111755

Product name

ILVBL antibody

Specificity

Human, Mouse, Rat; other species not tested.

Antibody description

ILVBL Rabbit Polyclonal antibody. Positive IF detected in Hela cells. Positive IHC detected in human colon cancer tissue. Positive WB detected in human thyroid gland tissue, human adrenal gland tissue. Observed molecular weight by Western-blot: 60-65 kDa

Preparation

This antibody was obtained by immunization of ILVBL recombinant protein (Accession Number: XM_005259717). Purification method: Antigen affinity purified.

Formulation

PBS with 0.1% sodium azide and 50% glycerol pH 7.3.

Storage

Store at -20°C. DO NOT ALIQUOT

Clonality

Polyclonal

Ig Type

Rabbit IgG

Applications

ELISA, WB, IHC, IF

Dilutions

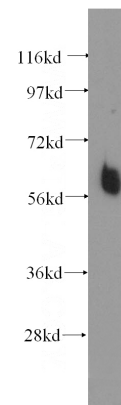
Recommended Dilution:

WB: 1:500-1:5000

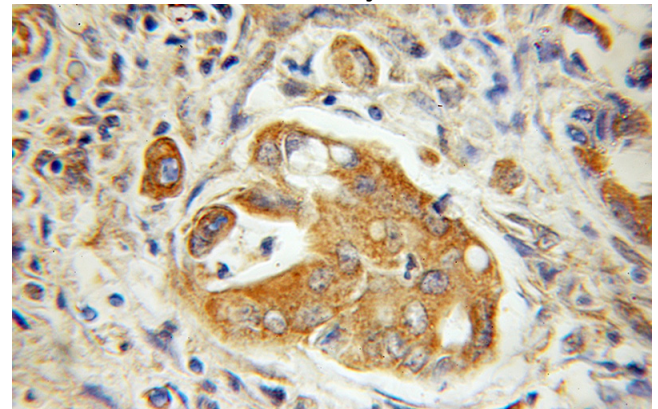
IHC: 1:20-1:200

IF: 1:10-1:100

Validations



human thyroid gland tissue were subjected to SDS PAGE followed by western blot with Catalog No:111755(ILVBL antibody) at dilution of 1:500



Immunohistochemical of paraffin-embedded human colon cancer using Catalog No:111755(ILVBL antibody) at dilution of 1:100 (under 10x lens)

Immunofluorescent analysis of Hela cells, using ILVBL antibody Catalog No:111755 at 1:25 dilution and Rhodamine-labeled goat anti-rabbit IgG (red).