

ATP5H antibody

Catalog Number: 108355

Product name

ATP5H antibody

Specificity

Human, Mouse, Rat; other species not tested.

Antibody description

ATP5H Rabbit Polyclonal antibody. Positive IHC detected in human lung cancer tissue, human pancreas tissue. Positive IF detected in HepG2 cells. Positive IP detected in mouse liver tissue. Positive WB detected in Jurkat cells, human brain tissue, human liver tissue, mouse brain tissue, mouse liver tissue, mouse ovary tissue, rat brain tissue, rat liver tissue. Observed molecular weight by Western-blot: 19-22 kDa

Preparation

This antibody was obtained by immunization of ATP5H recombinant protein (Accession Number: NM_001003785). Purification method: Antigen affinity purified.

Formulation

PBS with 0.02% sodium azide and 50% glycerol pH 7.3.

Storage

Store at -20°C. DO NOT ALIQUOT

Clonality

Polyclonal

Ig Type

Rabbit IgG

Applications

ELISA, IHC, IF, WB, IP

Dilutions

Recommended Dilution:

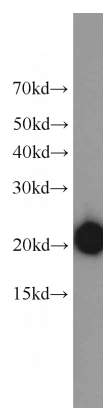
WB: 1:1000-1:10000

IP: 1:1000-1:10000

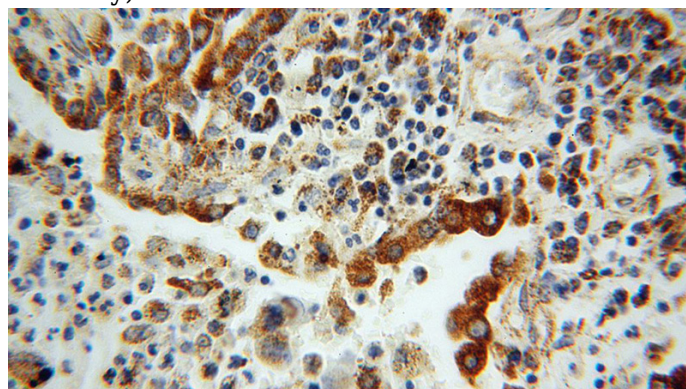
IHC: 1:20-1:200

IF: 1:10-1:100

Validations



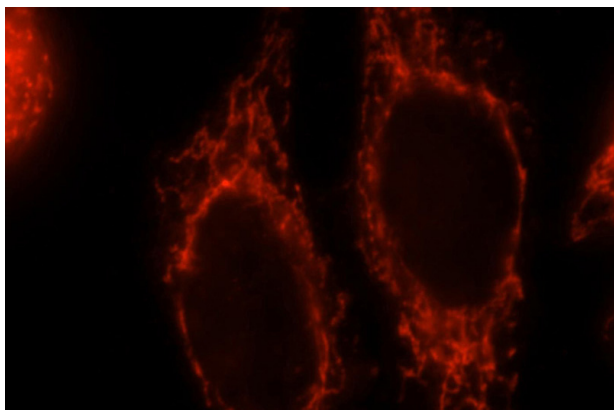
Jurkat cells were subjected to SDS PAGE followed by western blot with Catalog No:108355(ATP5H antibody) at dilution of 1:3000



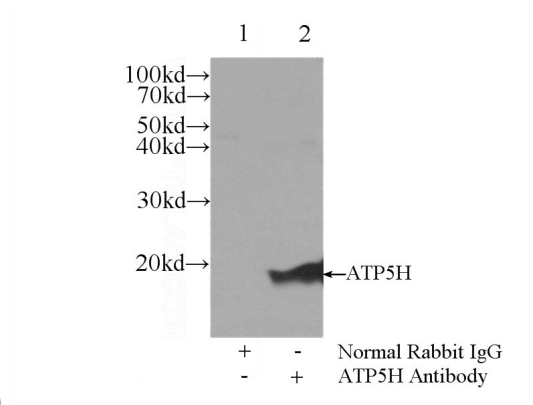
Immunohistochemical of paraffin-embedded human lung cancer using Catalog No:108355(ATP5H antibody) at dilution of 1:100 (under 40x lens)

ATP5H antibody

Catalog Number: 108355



Immunofluorescent analysis of HepG2 cells, using ATP5H antibody Catalog No:108355 at 1:25 dilution and Rhodamine-labeled goat anti-rabbit



IgG (red).

IP Result of anti-ATP5H (IP:Catalog No:108355, 3ug; Detection:Catalog No:108355 1:2000) with mouse liver tissue lysate 6000ug.