

Anti-HMGB1 Rabbit antibody



Catalog Number: 167355

Product name

Anti-HMGB1 Rabbit antibody

Specificity

Human, Mouse, Rat

Antibody description

HMGB1 Rabbit polyclonal antibody

Preparation

Antigen: A synthesized peptide derived from human HMGB1

Formulation

Rabbit IgG in phosphate buffered saline , pH 7.4, 150mM NaCl, 0.02% sodium azide and 50% glycerol.

Storage

Store at 4°C short term. Store at -20°C long term. Avoid freeze / thaw cycle.

Clonality

Polyclonal

Ig Type

Rabbit IgG

Applications

WB, IHC-P, ICC/IF, FC

Dilutions

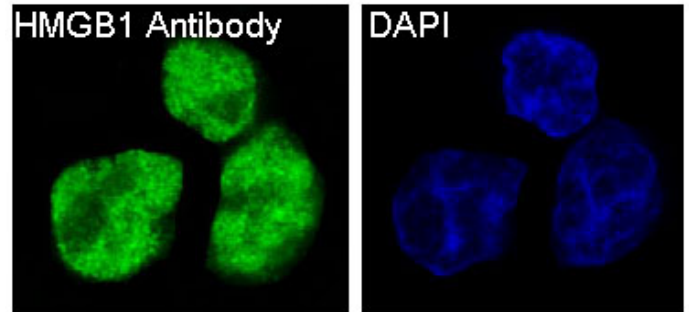
WB: 1/1000-1/2000

IHC: 1/50-1/100

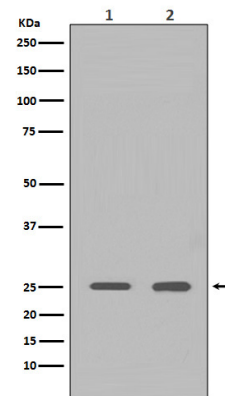
ICC/IF: 1/50-1/100

FC: 1/30

Validations

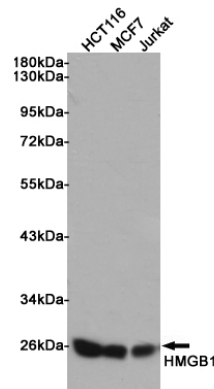


Immunofluorescent analysis of SW480 cells, using



HMGB1 Antibody.

Western blot analysis of HMGB1 expression in (1) HeLa cell lysate; (2) Rat brain lysate.

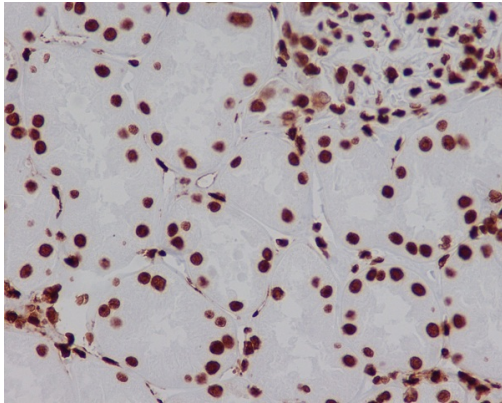


Western blot analysis of extracts from HCT116, MCF7 and Jurkat cells using HMGB1 Rabbit pAb at 1:1000 dilution. Predicted band size: 25kDa. Observed band size: 25kDa.

Anti-HMGB1 Rabbit antibody



Catalog Number: 167355



Immunohistochemical analysis of paraffin-embedded human kidney, using HMGB1 Antibody.