

# PYCR2 antibody

Catalog Number: 114355

## Product name

PYCR2 antibody

## Specificity

Human, Mouse, Rat; other species not tested.

## Antibody description

PYCR2 Rabbit Polyclonal antibody. Positive IHC detected in human ovary tissue, human kidney tissue, human lung tissue, human placenta tissue, human testis tissue. Positive IF detected in Hela cells. Positive IP detected in Jurkat cells. Positive WB detected in Jurkat cells, HeLa cells, L02 cells. Observed molecular weight by Western-blot: 34 kDa

## Preparation

This antibody was obtained by immunization of PYCR2 recombinant protein (Accession Number: NM\_013328). Purification method: Antigen affinity purified.

## Formulation

PBS with 0.02% sodium azide and 50% glycerol pH 7.3.

## Storage

Store at -20°C. DO NOT ALIQUOT

## Clonality

Polyclonal

## Ig Type

Rabbit IgG

## Applications

ELISA, WB, IHC, IF, IP

## Dilutions

Recommended Dilution:

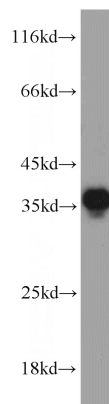
WB: 1:200-1:2000

IP: 1:200-1:2000

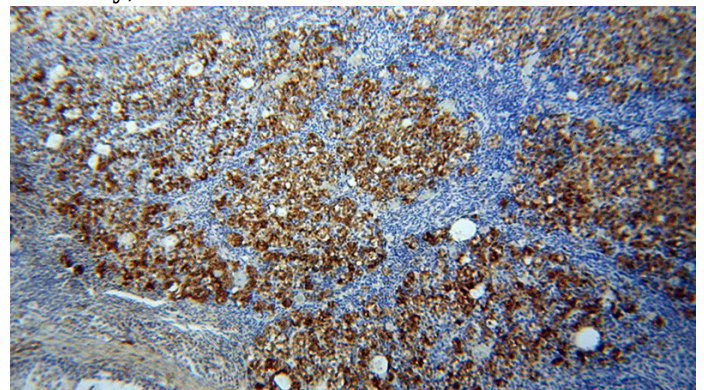
IHC: 1:20-1:200

IF: 1:10-1:100

## Validations



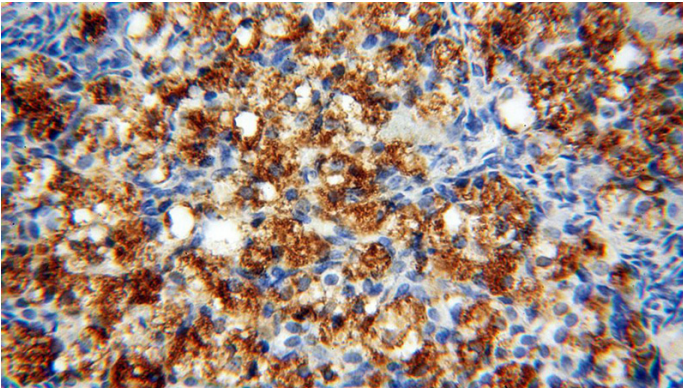
Jurkat cells were subjected to SDS PAGE followed by western blot with Catalog No:114355(PYCR2 antibody) at dilution of 1:800



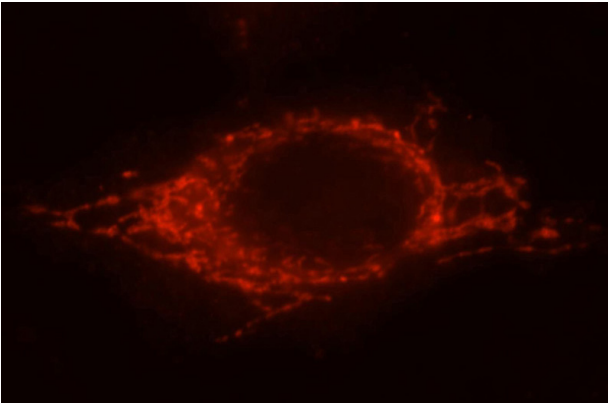
Immunohistochemical of paraffin-embedded human ovary using Catalog No:114355(PYCR2 antibody) at dilution of 1:50 (under 10x lens)

# PYCR2 antibody

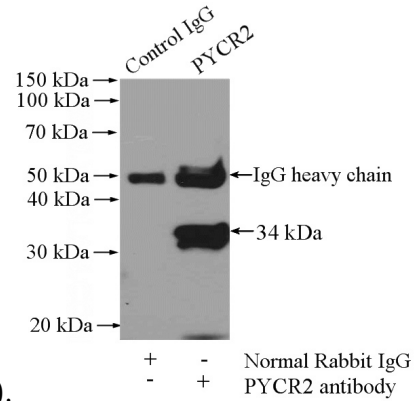
Catalog Number: 114355



Immunohistochemical of paraffin-embedded human ovary using Catalog No:114355(PYCR2 antibody) at dilution of 1:50 (under 40x lens)



Immunofluorescent analysis of HeLa cells, using PYCR2 antibody Catalog No:114355 at 1:25 dilution and Rhodamine-labeled goat anti-rabbit



IgG (red).

IP Result of anti-PYCR2 (IP:Catalog No:114355, 4ug; Detection:Catalog No:114355 1:500) with Jurkat cells lysate 2400ug.