

# C13orf37 antibody

Catalog Number: 108655

## Product name

C13orf37 antibody

## Immunogen

[Human C13orf37 Recombinant protein \(GST tag\)](#)

## Specificity

Human; other species not tested.

## Antibody description

C13orf37 Rabbit Polyclonal antibody. Positive IHC detected in human breast cancer tissue, human cervical cancer tissue.

## Preparation

This antibody was obtained by immunization of C13orf37 recombinant protein (Accession Number: NM\_001071775). Purification method: Antigen affinity purified.

## Formulation

PBS with 0.1% sodium azide and 50% glycerol pH 7.3.

## Storage

Store at -20°C. DO NOT ALIQUOT

## Clonality

Polyclonal

## Ig Type

Rabbit IgG

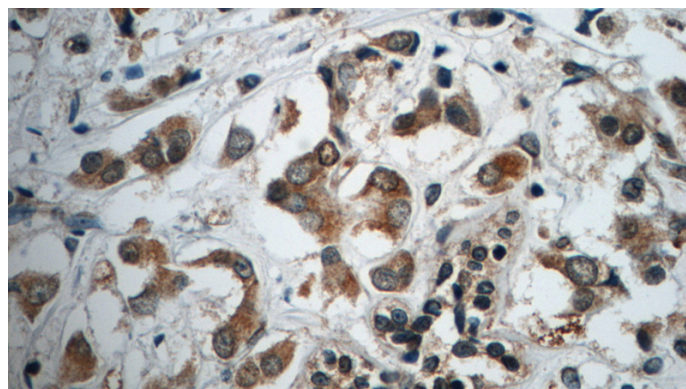
## Applications

ELISA, IHC

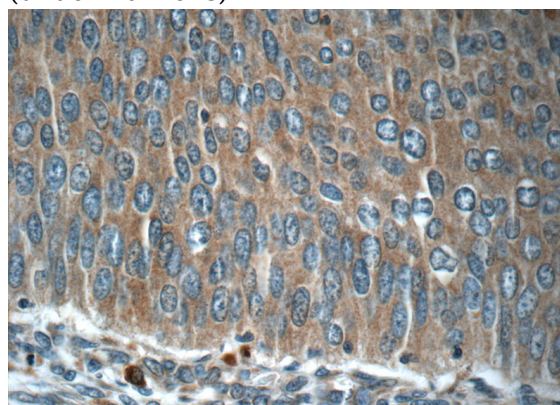
## Dilutions

Recommended Dilution:  
IHC: 1:20-1:200

## Validations



Immunohistochemistry of paraffin-embedded human breast cancer tissue slide using Catalog No:108655(C13orf37 Antibody) at dilution of 1:50 (under 40x lens)



Immunohistochemistry of paraffin-embedded human cervical cancer tissue slide using Catalog No:108655(C13orf37 Antibody) at dilution of 1:50 (under 40x lens)