

Product name

ubiquitin antibody

IHC: 1:20-1:200

IF: 1:10-1:100

Specificity

Human; other species not tested.

Antibody description

ubiquitin Mouse Monoclonal antibody. Positive IHC detected in human ovary tumor tissue, human breast cancer tissue, human pancreas tissue. Positive IF detected in HeLa cells. Positive WB detected in HeLa cells. Observed molecular weight by Western-blot: 25 kDa

Preparation

This antibody was obtained by immunization of ubiquitin recombinant protein (Accession Number: NM_001281718). Purification method: Protein G purified.

Formulation

PBS with 0.02% sodium azide and 50% glycerol pH 7.3.

Storage

Store at -20°C. DO NOT ALIQUOT

Clonality

Monoclonal

Ig Type

Mouse IgG1

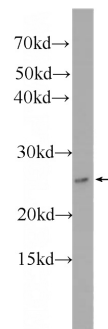
Applications

ELISA, IF, WB, IHC

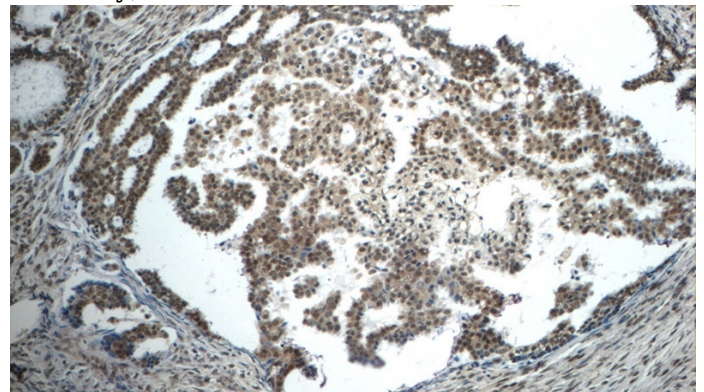
Dilutions

Recommended Dilution:

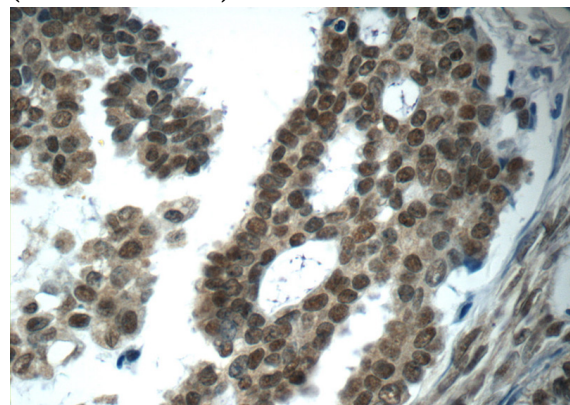
WB: 1:500-1:5000

Validations

HeLa cells were subjected to SDS PAGE followed by western blot with Catalog No:107655(ubiquitin Antibody) at dilution of 1:1000



Immunohistochemistry of paraffin-embedded human ovary tumor tissue slide using Catalog No:107655(ubiquitin Antibody) at dilution of 1:50 (under 10x lens)



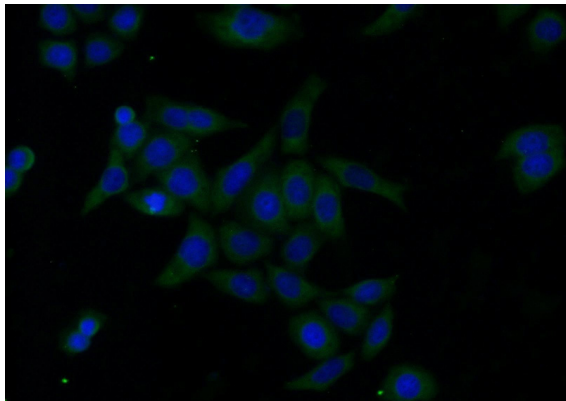
Immunohistochemistry of paraffin-embedded

ubiquitin antibody



Catalog Number: 107655

human ovary tumor tissue slide using Catalog No:107655(ubiquitin Antibody) at dilution of 1:50 (under 40x lens)



Immunofluorescent analysis of HeLa cells using Catalog No:107655(ubiquitin Antibody) at dilution of 1:25 and Alexa Fluor 488-conjugated AffiniPure Goat Anti-Mouse IgG(H+L)