

RHCG antibody

Catalog Number: 114655

Product name

RHCG antibody

Specificity

Human, Mouse, Rat; other species not tested.

Antibody description

RHCG Rabbit Polyclonal antibody. Positive WB detected in HEK-293 cells, human kidney tissue. Positive IHC detected in human pancreas cancer tissue, human kidney tissue. Observed molecular weight by Western-blot: 52-55 kDa

Preparation

This antibody was obtained by immunization of RHCG recombinant protein (Accession Number: NM_016321). Purification method: Antigen affinity purified.

Formulation

PBS with 0.1% sodium azide and 50% glycerol pH 7.3.

Storage

Store at -20°C. DO NOT ALIQUOT

Clonality

Polyclonal

Ig Type

Rabbit IgG

Applications

ELISA, WB, IHC

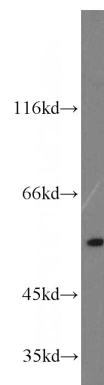
Dilutions

Recommended Dilution:

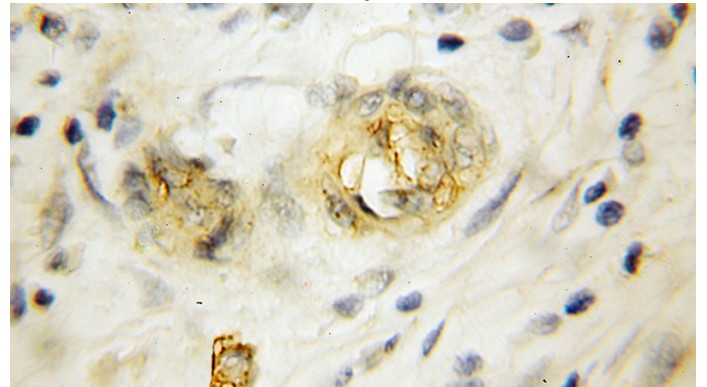
WB: 1:200-1:2000

IHC: 1:20-1:200

Validations



HEK-293 cells were subjected to SDS PAGE followed by western blot with Catalog No:114655(RHCG antibody) at dilution of 1:300



Immunohistochemical of paraffin-embedded human pancreas cancer using Catalog No:114655(RHCG antibody) at dilution of 1:50 (under 10x lens)