

# MEP1A antibody



Catalog Number: 112655

---

## Product name

MEP1A antibody

## Specificity

Human, Mouse, Rat; other species not tested.

## Antibody description

MEP1A Rabbit Polyclonal antibody. Positive WB detected in mouse kidney tissue. Observed molecular weight by Western-blot: 84 kDa

## Preparation

This antibody was obtained by immunization of MEP1A recombinant protein (Accession Number: NM\_005588). Purification method: Antigen affinity purified.

## Formulation

PBS with 0.1% sodium azide and 50% glycerol pH 7.3.

## Storage

Store at -20°C. DO NOT ALIQUOT

## Clonality

Polyclonal

## Ig Type

Rabbit IgG

## Applications

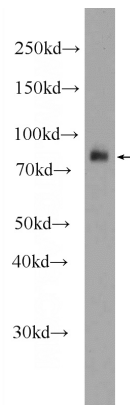
ELISA, WB

## Dilutions

Recommended Dilution:

WB: 1:500-1:5000

## Validations



mouse kidney tissue were subjected to SDS PAGE followed by western blot with Catalog No:112655(MEP1A Antibody) at dilution of 1:1000