

# IRF1 Monoclonal Antibody



Catalog Number: 160655

## Product name

IRF1 Monoclonal Antibody

## Specificity

Human, Mouse, Rat

## Antibody description

Monoclonal antibody to IRF1

## Preparation

Antigen: Recombinant protein of human IRF1

## Formulation

PBS with 0.02% sodium azide, 50% glycerol, pH7.3.

## Storage

Store at -20°C. Avoid freeze / thaw cycles.

## Clonality

Monoclonal

## Ig Type

Rabbit IgG

## Applications

WB, IHC, IF, IP

## Dilutions

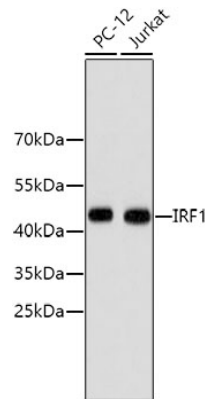
WB 1:500 - 1:1000

IHC 1:50 - 1:100

IF 1:50 - 1:100

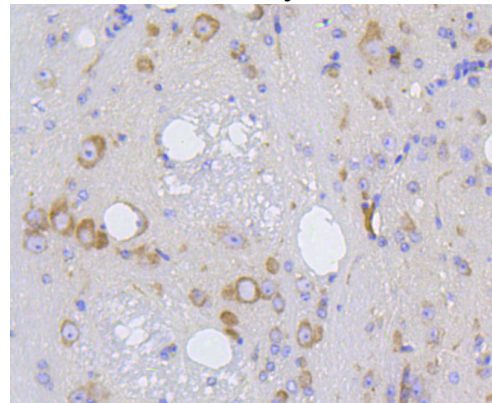
IP 1:20 - 1:50

## Validations



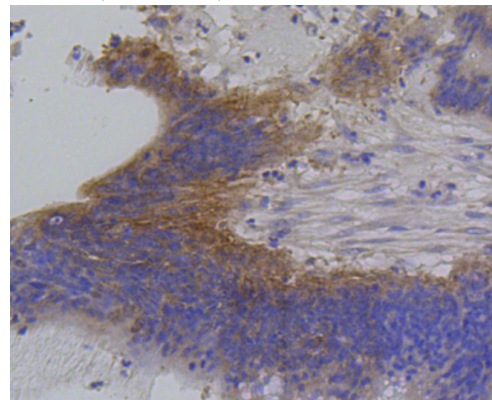
Western blot - IRF1 Monoclonal Antibody

Western blot analysis of extracts of various cell lines, using IRF1 antibody. Secondary antibody: HRP Goat Anti-Rabbit IgG (H+L) at 1:10000 dilution. Lysates/proteins: 25ug per lane. Blocking buffer: 3% nonfat dry milk in TBST.



Immunohistochemistry - IRF1 Monoclonal Antibody

Immunohistochemistry of paraffin-embedded mouse brain using IRF1 antibody at dilution of 1:100 (40x lens).



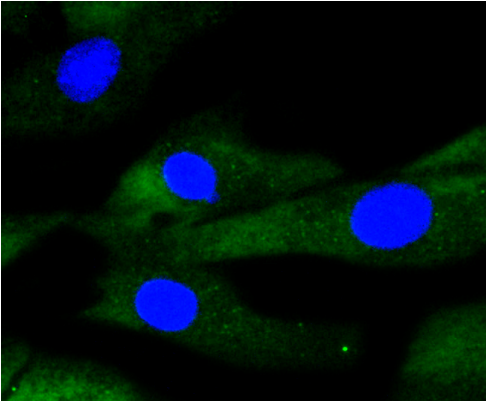
# IRF1 Monoclonal Antibody

Catalog Number: 160655

---

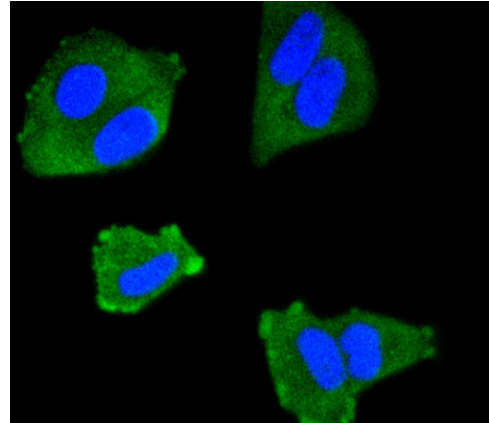
## Immunohistochemistry - IRF1 Monoclonal Antibody

Immunohistochemistry of paraffin-embedded human colon carcinoma using IRF1 antibody at dilution of 1:100 (40x lens).



Immunofluorescence - IRF1 Monoclonal Antibody

## Immunofluorescence analysis of NIH-3T3 cells using IRF1 antibody .



Immunofluorescence - IRF1 Monoclonal Antibody

## Immunofluorescence analysis of HeLa cells using IRF1 antibody .