

# WDR81 Polyclonal Antibody



Catalog Number: 161255

## Product name

WDR81 Polyclonal Antibody

## Specificity

Human, Mouse, Rat

## Antibody description

Polyclonal antibody to WDR81

## Preparation

Antigen: Recombinant fusion protein containing a sequence corresponding to amino acids 360-600 of human WDR81 (NP\_689561.2).

## Formulation

PBS with 0.02% sodium azide, 50% glycerol, pH7.3.

## Storage

Store at -20°C. Avoid freeze / thaw cycles.

## Clonality

Polyclonal

## Ig Type

Rabbit IgG

## Applications

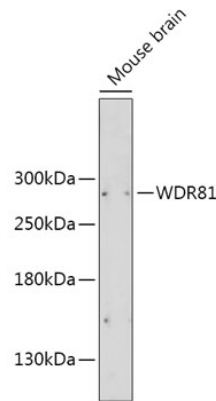
WB, IF

## Dilutions

WB 1:500 - 1:2000

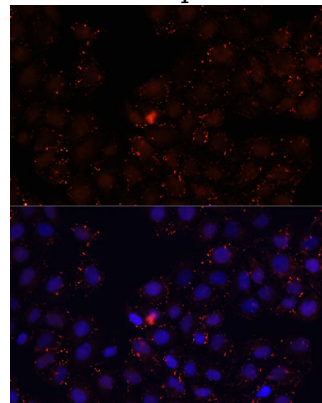
IF 1:50 - 1:200

## Validations



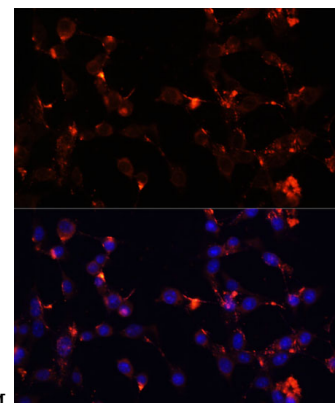
Western blot - WDR81 Polyclonal Antibody

Western blot analysis of extracts of Mouse brain, using WDR81 antibody at 1:2000 dilution. Secondary antibody: HRP Goat Anti-Rabbit IgG (H+L) at 1:10000 dilution. Lysates/proteins: 25ug per lane. Blocking buffer: 3% nonfat dry milk in TBST. Detection: ECL Basic Kit. Exposure time: 90s.



Immunofluorescence - WDR81 Polyclonal Antibody

Immunofluorescence analysis of HeLa cells using WDR81 antibody at dilution of 1:100. Blue: DAPI



for nuclear staining.

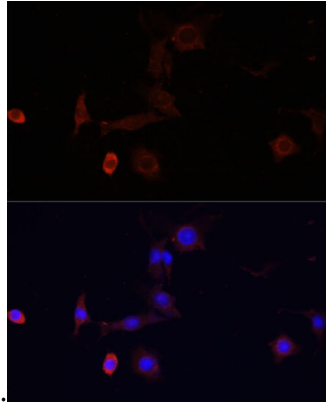
# WDR81 Polyclonal Antibody

Catalog Number: 161255

---

## Immunofluorescence - WDR81 Polyclonal Antibody

Immunofluorescence analysis of NIH/3T3 cells using WDR81 antibody at dilution of 1:100. Blue:



DAPI for nuclear staining.

## Immunofluorescence - WDR81 Polyclonal Antibody

Immunofluorescence analysis of PC12 cells using WDR81 antibody at dilution of 1:100. Blue: DAPI for nuclear staining.