

Albumin antibody



Catalog Number: 107955

Product name

Albumin antibody

Recommended Dilution:

WB: 1:5000-1:50000

Specificity

Human, Mouse, Rat; other species not tested.

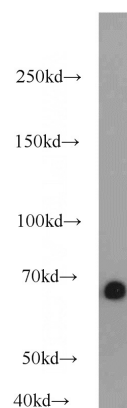
IP: 1:5000-1:50000

IHC: 1:20-1:200

Antibody description

Albumin Rabbit Polyclonal antibody. Positive IHC detected in human liver tissue, human heart tissue, human liver cancer tissue, human spleen tissue. Positive WB detected in human blood tissue, mouse liver tissue, mouse serum tissue. Positive IP detected in human plasma tissue. Observed molecular weight by Western-blot: 66 kDa

Validations



Preparation

This antibody was obtained by immunization of Albumin recombinant protein (Accession Number: NM_000477). Purification method: Antigen affinity purified.

human blood tissue were subjected to SDS PAGE followed by western blot with Catalog No:107955(ALB antibody) at dilution of 1:10000

Formulation

PBS with 0.02% sodium azide and 50% glycerol pH 7.3.

Storage

Store at -20°C. DO NOT ALIQUOT

Clonality

Polyclonal

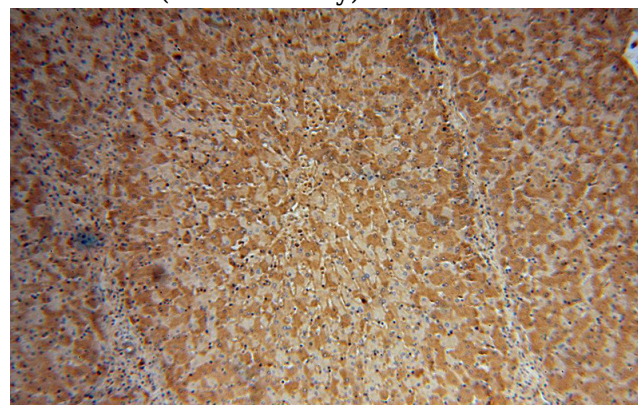
Ig Type

Rabbit IgG

Applications

ELISA, WB, IHC, IP

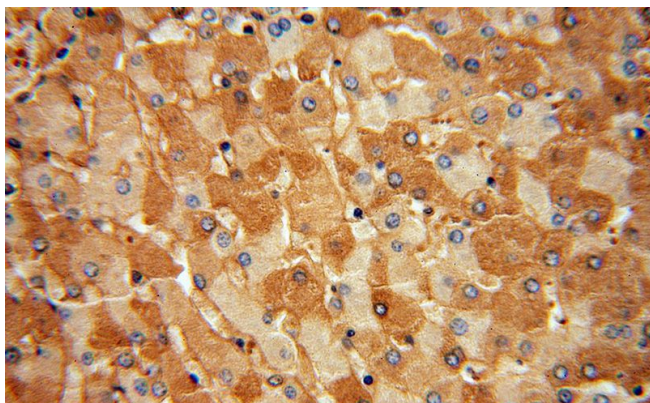
Dilutions



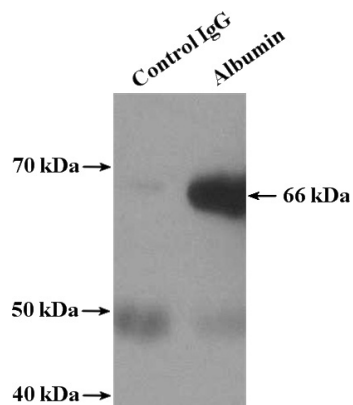
Immunohistochemical of paraffin-embedded human liver using Catalog No:107955(ALB antibody) at dilution of 1:100 (under 10x lens)

Albumin antibody

Catalog Number: 107955



Immunohistochemical of paraffin-embedded human liver using Catalog No:107955(ALB antibody) at dilution of 1:100 (under 40x lens)



IP Result of anti-Albumin (IP:Catalog No:107955, 4ug; Detection:Catalog No:107955 1:10000) with human plasma tissue lysate 4000ug.