

Anti-S1PR2 antibody



Catalog Number: 175955

Product name

Anti-S1PR2 antibody

Specificity

Human, Mouse, Rat

Antibody description

Rabbit polyclonal antibody to S1PR2

Preparation

This antigen of this antibody was the antiserum was produced against synthesized peptide derived from human edg5. aa range:261-310

Formulation

Liquid, Liquid in PBS containing 50% glycerol, 0.5% BSA and 0.02% sodium azide.

Storage

Store at +4°C after thawing. Aliquot store at -20°C or -80°C. Avoid repeated freeze / thaw cycles.

Clonality

Polyclonal

Ig Type

Rabbit IgG

Applications

WB, IHC-P, IF

Dilutions

WB: 1:500-1:2000

IHC-P: 1:100-1:300

IF: 1:100-1:500

Validations

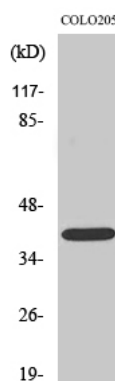


Fig1.;; Western Blot analysis of various cells using EDG-5 Polyclonal Antibody