

# RBMS1 antibody

Catalog Number: 114555

## Product name

RBMS1 antibody

IP: 1:200-1:2000

IF: 1:20-1:200

## Specificity

Human, Mouse, Rat; other species not tested.

## Antibody description

RBMS1 Rabbit Polyclonal antibody. Positive WB detected in HeLa cells. Positive IP detected in HeLa cells. Positive IF detected in HepG2 cells. Observed molecular weight by Western-blot: 45 kDa

## Preparation

This antibody was obtained by immunization of RBMS1 recombinant protein (Accession Number: NM\_016836). Purification method: Antigen affinity purified.

## Formulation

PBS with 0.1% sodium azide and 50% glycerol pH 7.3.

## Storage

Store at -20°C. DO NOT ALIQUOT

## Clonality

Polyclonal

## Ig Type

Rabbit IgG

## Applications

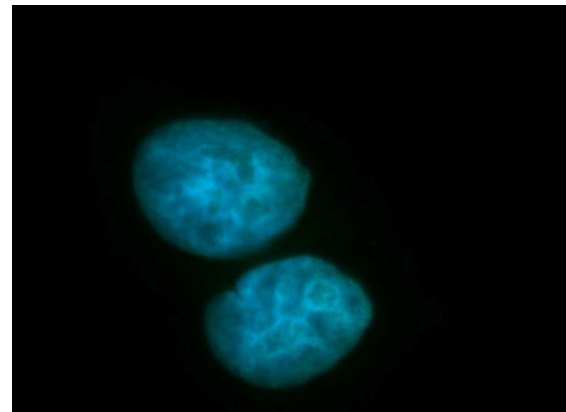
ELISA, IF, WB, IP

## Dilutions

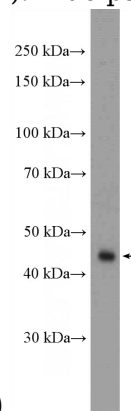
Recommended Dilution:

WB: 1:500-1:5000

## Validations

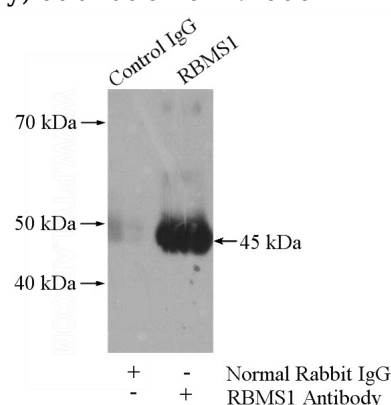


Immunofluorescent analysis of HepG2 cells, using RBMS1 antibody Catalog No:114555 at 1:100 dilution and FITC-labeled donkey anti-rabbit IgG(green). Blue pseudocolor = DAPI (fluorescent



DNA dye).

HeLa cells were subjected to SDS PAGE followed by western blot with Catalog No:114555(RBMS1 Antibody) at dilution of 1:1000



# RBMS1 antibody



Catalog Number: 114555

---

IP Result of anti-RBMS1 (IP:Catalog No:114555,

4ug; Detection:Catalog No:114555 1:500) with HeLa cells lysate 1200ug.