

# HSDL2 antibody

Catalog Number: 111555

## Product name

HSDL2 antibody

IHC: 1:20-1:200

IF: 1:20-1:200

## Specificity

Human, Mouse, Rat; other species not tested.

## Antibody description

HSDL2 Rabbit Polyclonal antibody. Positive IF detected in HeLa cells. Positive IHC detected in human prostate cancer tissue. Positive WB detected in HEK-293 cells, HeLa cells. Observed molecular weight by Western-blot: 45 kDa

## Preparation

This antibody was obtained by immunization of HSDL2 recombinant protein (Accession Number: NM\_001195822). Purification method: Antigen affinity purified.

## Formulation

PBS with 0.02% sodium azide and 50% glycerol pH 7.3.

## Storage

Store at -20°C. DO NOT ALIQUOT

## Clonality

Polyclonal

## Ig Type

Rabbit IgG

## Applications

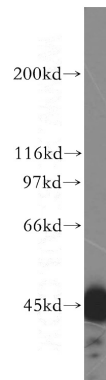
ELISA, WB, IHC, IF

## Dilutions

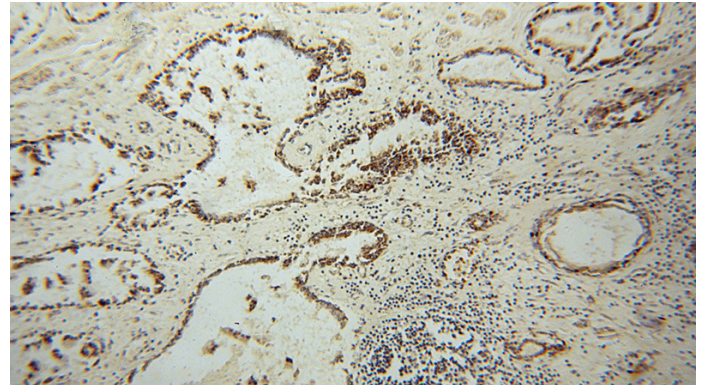
Recommended Dilution:

WB: 1:1000-1:10000

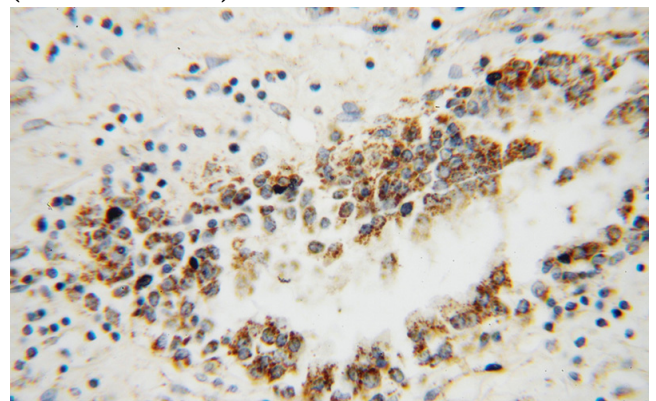
## Validations



HEK-293 cells were subjected to SDS PAGE followed by western blot with Catalog No:111555(HSDL2 antibody) at dilution of 1:500



Immunohistochemical of paraffin-embedded human prostate cancer using Catalog No:111555(HSDL2 antibody) at dilution of 1:100 (under 10x lens)



Immunohistochemical of paraffin-embedded

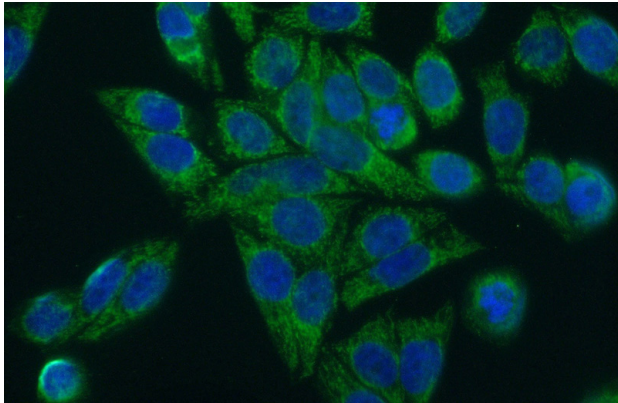
# HSDL2 antibody



Catalog Number: 111555

---

human prostate cancer using Catalog No:111555(HSDL2 antibody) at dilution of 1:100 (under 40x lens)



Immunofluorescent analysis of (10% Formaldehyde) fixed HeLa cells using Catalog No:111555(HSDL2 Antibody) at dilution of 1:50 and Alexa Fluor 488-conjugated AffiniPure Goat Anti-Rabbit IgG(H+L)