

Anti-Bcl-XL Rabbit antibody



Catalog Number: 167155

Product name

Anti-Bcl-XL Rabbit antibody

Specificity

Human, Mouse, Rat

Antibody description

Bcl-XL Rabbit polyclonal antibody

Preparation

Antigen: A synthesized peptide derived from human Bcl-XL

Formulation

Rabbit IgG in phosphate buffered saline , pH 7.4, 150mM NaCl, 0.02% sodium azide and 50% glycerol.

Storage

Store at 4°C short term. Store at -20°C long term. Avoid freeze / thaw cycle.

Clonality

Polyclonal

Ig Type

Rabbit IgG

Applications

WB, IHC-P, ICC/IF, IP, FC

Dilutions

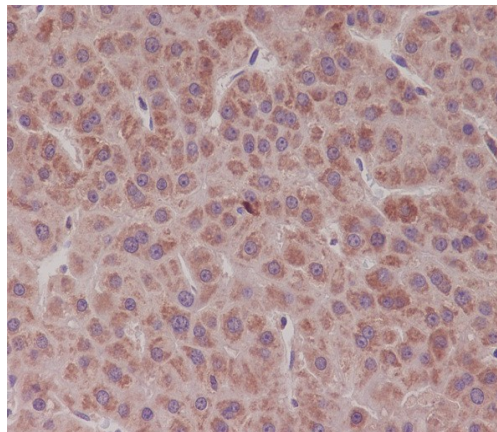
WB: 1/500-1/2000

IHC: 1/50-1/200

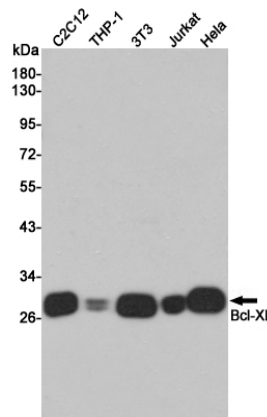
ICC/IF: 1/50-1/200

IP: 1/50

Validations

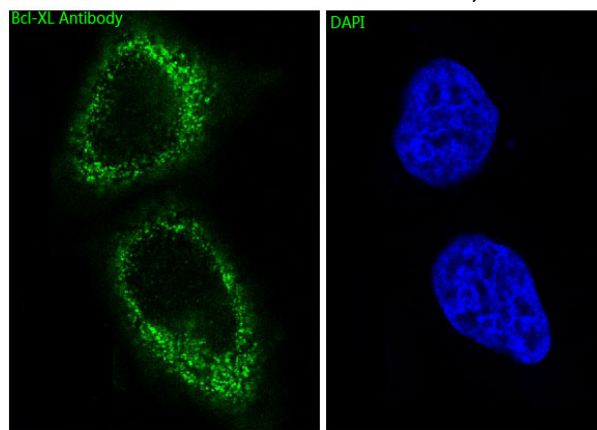


Immunohistochemical analysis of paraffin-embedded human liver cancer, using Bcl-XL



Antibody.

Western blot analysis of Bcl-XL expression in C2C12, THP-1, 3T3, Jurkat cell lysates using Bcl-XL antibody at 1/1000 dilution. Predicted band size: 48KDa. Observed band size: 46, 54KDa.



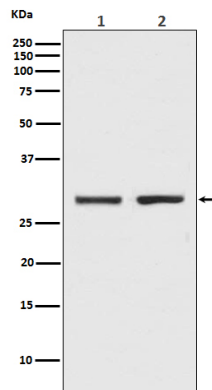
Immunofluorescent analysis of HeLa cells, using

Anti-Bcl-XL Rabbit antibody



Catalog Number: 167155

Western blot analysis of Bcl-XL expression in (1) K562 cell lysate; (2) C6 cell lysate.



Bcl-XL Antibody .