

**Product name**

Anti- antibody

**Specificity**

Arabidopsis thaliana

**Antibody description**

Rabbit polyclonal antibody to

**Preparation**

This antigen of this antibody was synthetic peptide within arath ech aa 1-25.

**Formulation**

Liquid, 1\*PBS (pH7.4), 0.2% BSA, 50% Glycerol.  
Preservative: 0.05% Sodium Azide.

**Storage**

Store at +4°C after thawing. Aliquot store at -20°C. Avoid repeated freeze / thaw cycles.

**Clonality**

Polyclonal

**Ig Type**

Rabbit IgG

**Applications**

IF, IHC-P

**Dilutions**

IF:1:50-1:200

IHC-P:1:50-1:200

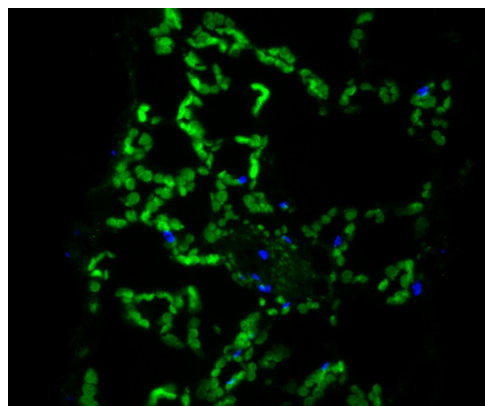
**Validations**

Fig1:: IF staining of ECH in Arabidopsis thaliana leaf tissue (green). The nuclear counter stain is DAPI (blue). Cells were fixed in paraformaldehyde, permeabilised with 0.25% Triton X100/PBS.

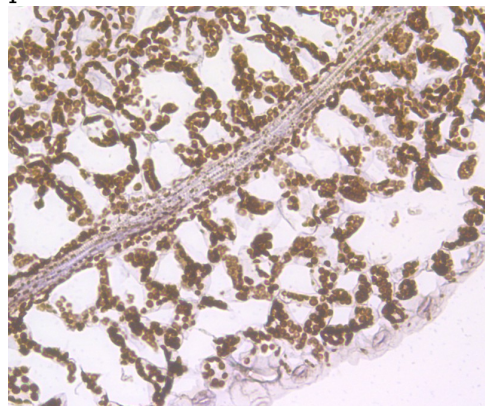


Fig2:: Immunohistochemical analysis of paraffin-embedded Arabidopsis thaliana leaf tissue using anti-ECH antibody. Counter stained with hematoxylin.