

mH2A1 Polyclonal Antibody



Catalog Number: 165155

Product name

mH2A1 Polyclonal Antibody

Specificity

Human, Mouse, Rat

Antibody description

Polyclonal antibody to mH2A1

Preparation

Antigen: Recombinant fusion protein containing a sequence corresponding to amino acids 123-372 of human H2AFY (NP_613258.2).

Formulation

PBS with 0.02% sodium azide, 50% glycerol, pH7.3.

Storage

Store at -20°C. Avoid freeze / thaw cycles.

Clonality

Polyclonal

Ig Type

Rabbit IgG

Applications

WB, IHC, IF

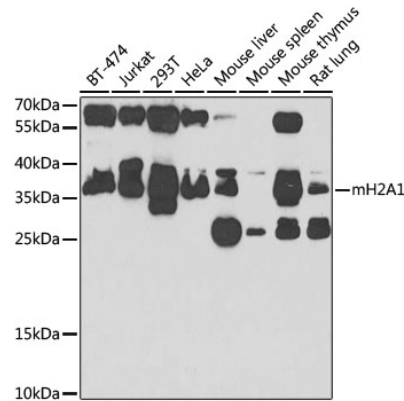
Dilutions

WB 1:500 - 1:2000

IHC 1:50 - 1:200

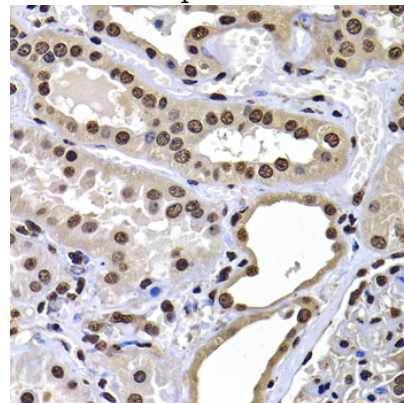
IF 1:50 - 1:100

Validations



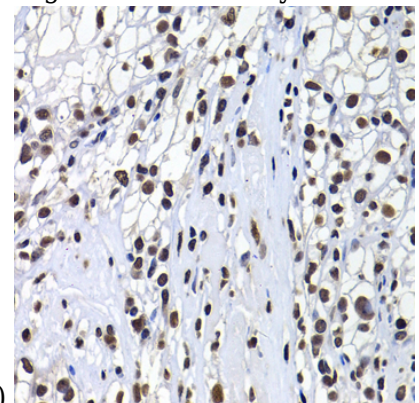
Western blot - mH2A1 Polyclonal Antibody

Western blot analysis of extracts of various cell lines, using H2AFY antibody at 1:1000 dilution. Secondary antibody: HRP Goat Anti-Rabbit IgG (H+L) at 1:10000 dilution. Lysates/proteins: 25ug per lane. Blocking buffer: 3% nonfat dry milk in TBST. Detection: ECL Basic Kit. Exposure time: 90s.



Immunohistochemistry - mH2A1 Polyclonal Antibody

Immunohistochemistry of paraffin-embedded human kidney using mH2A1 antibody at dilution of



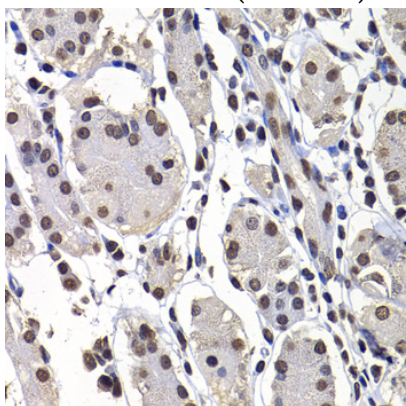
1:100 (40x lens).

mH2A1 Polyclonal Antibody

Catalog Number: 165155

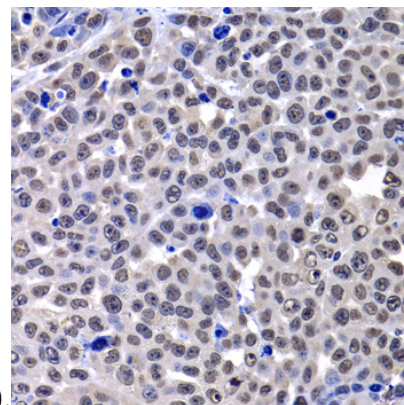
Immunohistochemistry - mH2A1 Polyclonal Antibody

Immunohistochemistry of paraffin-embedded human kidney cancer using mH2A1 antibody at dilution of 1:100 (40x lens).



Immunohistochemistry - mH2A1 Polyclonal Antibody

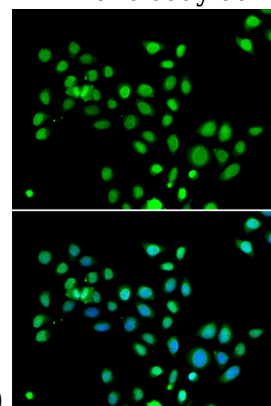
Immunohistochemistry of paraffin-embedded human stomach using mH2A1 antibody at dilution



of 1:100 (40x lens).

Immunohistochemistry - mH2A1 Polyclonal Antibody

Immunohistochemistry of paraffin-embedded mouse lung cancer using mH2A1 antibody at



dilution of 1:100 (40x lens).

Immunofluorescence - mH2A1 Polyclonal Antibody

Immunofluorescence analysis of U2OS cells using mH2A1 antibody . Blue: DAPI for nuclear staining.