

# PPP6C antibody

Catalog Number: 114155

## Product name

PPP6C antibody

## Specificity

Human, Mouse, Rat; other species not tested.

## Antibody description

PPP6C Rabbit Polyclonal antibody. Positive WB detected in human testis tissue, HEK-293 cells, NIH/3T3 cells. Positive IP detected in mouse testis tissue. Observed molecular weight by Western-blot: 35 kDa

## Preparation

This antibody was obtained by immunization of PPP6C recombinant protein (Accession Number: NM\_002721). Purification method: Antigen affinity purified.

## Formulation

PBS with 0.02% sodium azide and 50% glycerol pH 7.3.

## Storage

Store at -20°C. DO NOT ALIQUOT

## Clonality

Polyclonal

## Ig Type

Rabbit IgG

## Applications

ELISA, WB, IP

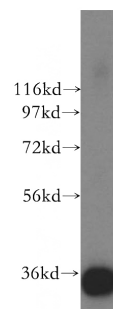
## Dilutions

Recommended Dilution:

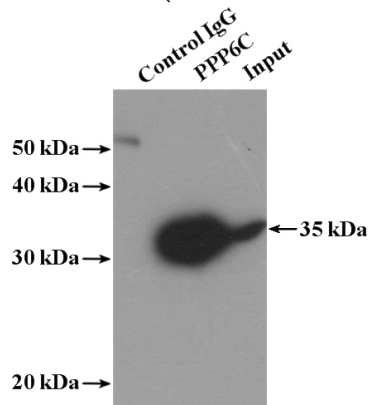
WB: 1:200-1:2000

IP: 1:200-1:2000

## Validations



human testis tissue were subjected to SDS PAGE followed by western blot with Catalog No:114155(PPP6C antibody) at dilution of 1:500



IP Result of anti-PPP6C (IP:Catalog No:114155, 3ug; Detection:Catalog No:114155 1:500) with mouse testis tissue lysate 4000ug.