

General Information

Gene Name Synonym

Fusion glycoprotein F2'; Interchain peptide;
Fusion glycoprotein F2; Fusion glycoprotein F1

Protein Construction

A DNA sequence encoding the extracellular domain of human RSV (strain RSS-2) fusion protein (P11209) (Met 1-Thr 529) was expressed with a polyhistidine tag at the C-terminus.

Organism

RSV

Expression Host

Baculovirus-Insect Cells

QC Testing

Purity

> 95 % as determined by SDS-PAGE

Endotoxin

< 1.0 EU per μg of the protein as determined by the LAL method

Stability

Samples are stable for up to twelve months from date of receipt at -70°C

Predicted N terminal

Phe 22

Molecular Mass

The secreted recombinant human RSV (strain RSS-2) comprises 519 amino acids with a predicted molecular mass of 57.8 kDa. The RSV

F0 precursor protein is cleaved into the disulfide-linked F1 and F2 subunits. As a result of glycosylation, the apparent molecular mass of the protein is approximately 63 kDa and 44-53 kDa in SDS-PAGE under reducing conditions, corresponding to the two subunits respectively.

Formulation

Lyophilized from sterile 20mM Tris, 500mM NaCl, pH 7.4, 10% gly

1. 5 % trehalose and mannitol are added as protectants before lyophilization.

2. Please contact us for any concerns or special requirements.

Usage Guide

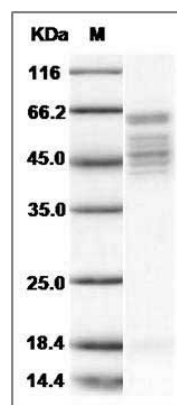
Storage

Store it under sterile conditions at -20°C to -80°C . It is recommended that the protein be aliquoted for optimal storage. Avoid repeated freeze-thaw cycles.

Reconstitution

Adding sterile water, prepare a stock solution of 0.25 mg/ml. Concentration is measured by UV-Vis.

SDS-PAGE



Human RSV Fusion protein / RSV-F (Strain RSS-2) Protein (His Tag) SDS-PAGE