

# E2F4 antibody

Catalog Number: 110155

## Product name

E2F4 antibody

IP: 1:500-1:5000

IHC: 1:20-1:200

## Specificity

Human, Mouse, Rat; other species not tested.

## Antibody description

E2F4 Rabbit Polyclonal antibody. Positive WB detected in A431 cells, HL-60 cells, Jurkat cells, NIH/3T3 cells, Raji cells. Positive IP detected in mouse brain tissue. Positive IHC detected in human lymphoma tissue. Observed molecular weight by Western-blot: 60-70 kDa

## Preparation

This antibody was obtained by immunization of E2F4 recombinant protein (Accession Number: NM\_001950). Purification method: Antigen affinity purified.

## Formulation

PBS with 0.1% sodium azide and 50% glycerol pH 7.3.

## Storage

Store at -20°C. DO NOT ALIQUOT

## Clonality

Polyclonal

## Ig Type

Rabbit IgG

## Applications

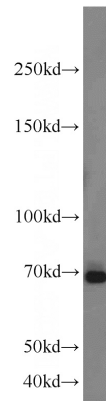
ELISA, WB, IHC, IP

## Dilutions

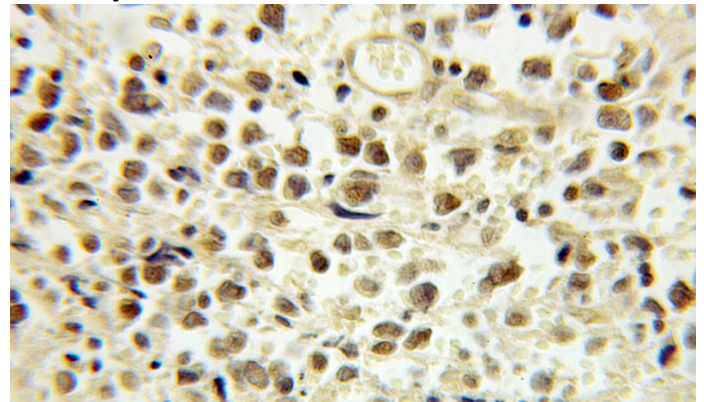
Recommended Dilution:

WB: 1:500-1:5000

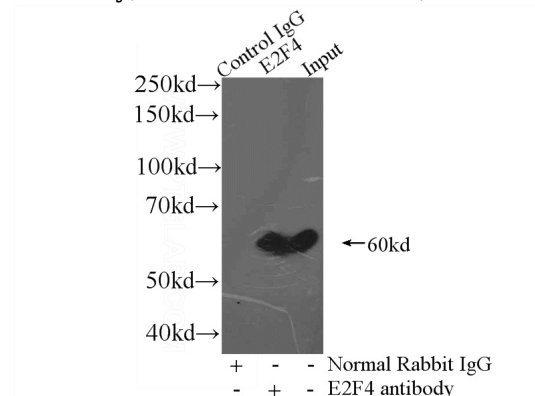
## Validations



A431 cells were subjected to SDS PAGE followed by western blot with Catalog No:110155(E2F4 antibody) at dilution of 1:1000



Immunohistochemical of paraffin-embedded human lymphoma using Catalog No:110155(E2F4 antibody) at dilution of 1:100 (under 10x lens)



IP Result of anti-E2F4 (IP:Catalog No:110155, 3ug; Detection:Catalog No:110155 1:1000) with

# E2F4 antibody



Catalog Number: 110155

---

mouse brain tissue lysate 3600ug.