

RtcB-Specific antibody



Catalog Number: 114855

Product name

RtcB-Specific antibody

IP: 1:200-1:2000

IF: 1:10-1:100

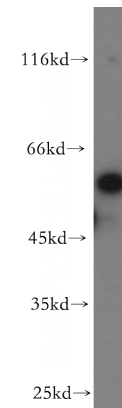
Specificity

Human, Mouse; other species not tested.

Validations

Antibody description

RtcB-Specific Rabbit Polyclonal antibody. Positive IF detected in HeLa cells. Positive WB detected in HeLa cells, HepG2 cells, mouse brain tissue. Positive IP detected in HeLa cells. Observed molecular weight by Western-blot: 55kd



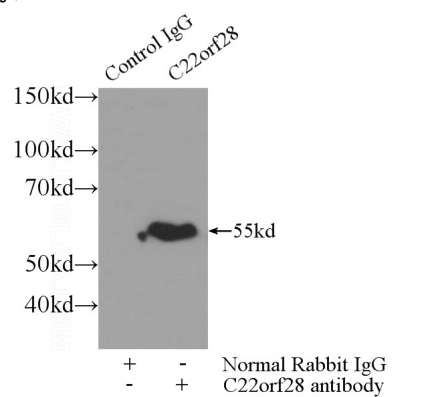
Preparation

This antibody was obtained by immunization of RtcB-Specific recombinant protein (Accession Number: NM_014306). Purification method: Antigen affinity purified.

HeLa cells were subjected to SDS PAGE followed by western blot with Catalog No:114855(C22orf28 antibody) at dilution of 1:500

Formulation

PBS with 0.02% sodium azide and 50% glycerol pH 7.3.



Storage

Store at -20°C. DO NOT ALIQUOT

IP Result of anti-C22orf28 (IP:Catalog No:114855, 3ug; Detection:Catalog No:114855 1:500) with HeLa cells lysate 3000ug.

Clonality

Polyclonal

Ig Type

Rabbit IgG

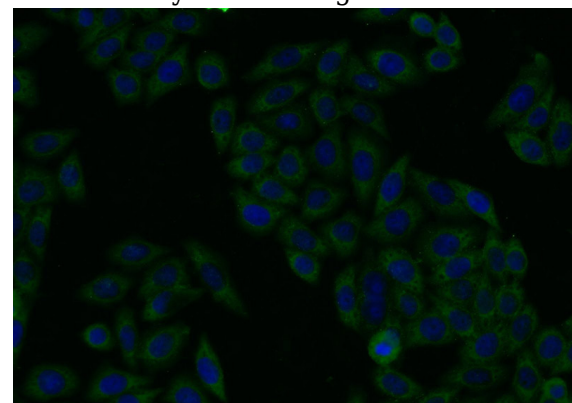
Applications

ELISA, WB, IF, IP

Dilutions

Recommended Dilution:

WB: 1:1000-1:10000



Immunofluorescent analysis of HeLa cells using Catalog No:114855(C22orf28 Antibody) at dilution

RtcB-Specific antibody



Catalog Number: 114855

of 1:25 and Alexa Fluor 488-conjugated AffiniPure Goat Anti-Rabbit IgG(H+L)