

# CTSE Polyclonal Antibody



Catalog Number: 163855

## Product name

CTSE Polyclonal Antibody

## Specificity

Human, Mouse

## Antibody description

Polyclonal antibody to CTSE

## Preparation

Antigen: Recombinant protein of human CTSE

## Formulation

PBS with 0.02% sodium azide, 50% glycerol, pH7.3.

## Storage

Store at -20°C. Avoid freeze / thaw cycles.

## Clonality

Polyclonal

## Ig Type

Rabbit IgG

## Applications

WB, IHC, IF

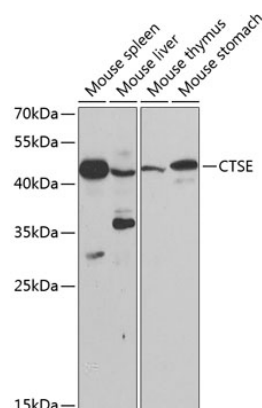
## Dilutions

WB 1:500 - 1:2000

IHC 1:50 - 1:200

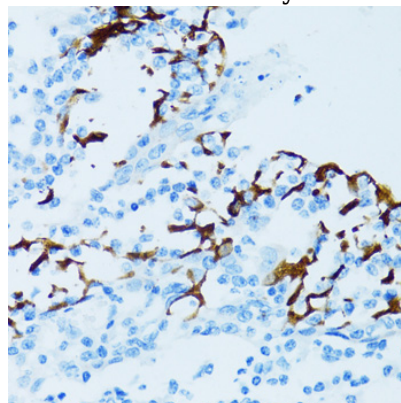
IF 1:50 - 1:200

## Validations



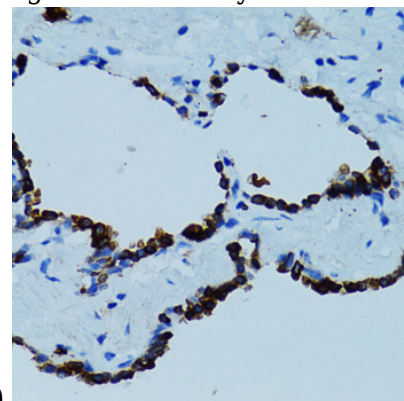
Western blot - CTSE Polyclonal Antibody

Western blot analysis of extracts of various cell lines, using CTSE antibody at 1:200 dilution. Secondary antibody: HRP Goat Anti-Rabbit IgG (H+L) at 1:10000 dilution. Lysates/proteins: 25ug per lane. Blocking buffer: 3% nonfat dry milk in TBST.



Immunohistochemistry - CTSE Polyclonal Antibody

Immunohistochemistry of paraffin-embedded human tonsil using CTSE antibody at dilution of



1:100 (40x lens).

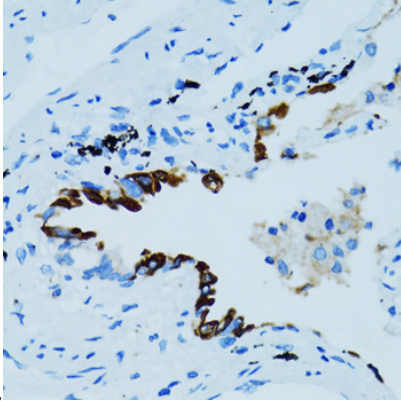
Immunohistochemistry - CTSE Polyclonal Antibody

# CTSE Polyclonal Antibody

Catalog Number: 163855

---

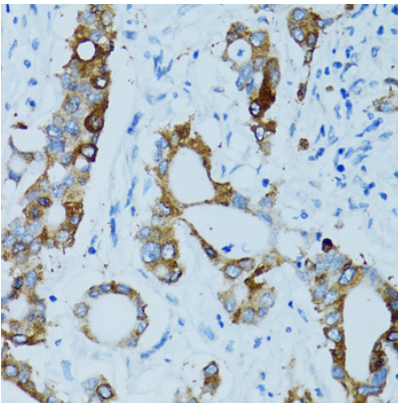
Immunohistochemistry of paraffin-embedded human lung using CTSE antibody at dilution of



1:100 (40x lens).

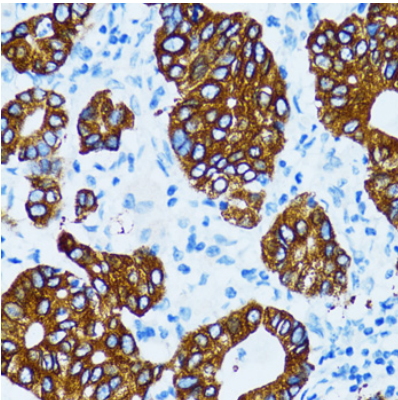
Immunohistochemistry - CTSE Polyclonal Antibody

Immunohistochemistry of paraffin-embedded human lung cancer using CTSE antibody at dilution of 1:100 (40x lens).

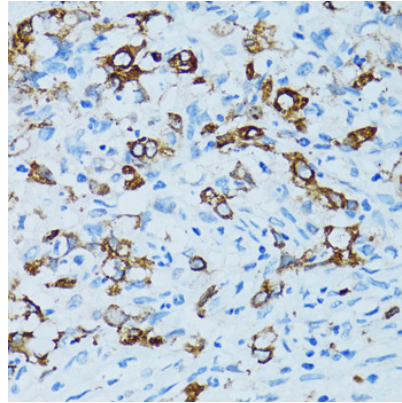


Immunohistochemistry - CTSE Polyclonal Antibody

Immunohistochemistry of paraffin-embedded human colon carcinoma using CTSE antibody at dilution of 1:100 (40x lens).

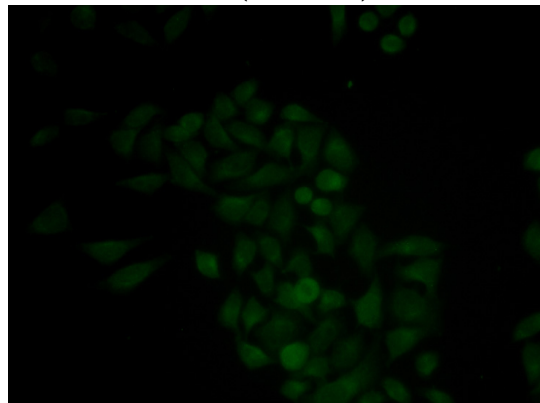


Immunohistochemistry - CTSE Polyclonal Antibody  
Immunohistochemistry of paraffin-embedded human gastric cancer using CTSE antibody at dilution of 1:100 (40x lens).



Immunohistochemistry - CTSE Polyclonal Antibody

Immunohistochemistry of paraffin-embedded human uterine cancer using CTSE antibody at dilution of 1:100 (40x lens).



Immunofluorescence - CTSE Polyclonal Antibody

Immunofluorescence analysis of MCF-7 cells using CTSE antibody .