

# Anti-RSV-G antibody



Catalog Number: 142855

## Product name

Anti-RSV-G antibody

## Immunogen

[RSV RSV-G / Glycoprotein G \(His Tag\)](#)

## Specificity

Human RSV (B1) glycoprotein G / RSV-G

## Antibody description

Rabbit Polyclonal to RSV RSV-G

## Preparation

Produced in rabbits immunized with purified, recombinant Human RSV (B1) glycoprotein G / RSV-G . Human RSV (B1) glycoprotein G / RSV-G specific IgG was purified by Human RSV (B1) glycoprotein G / RSV-G affinity chromatography.

## Formulation

0.2 µm filtered solution in PBS

## Storage

This antibody can be stored at 2°C-8°C for one month without detectable loss of activity. Antibody products are stable for twelve months from date of receipt when stored at -20°C to -80°C.

Preservative-Free.

Sodium azide is recommended to avoid contamination (final concentration 0.05%-0.1%). It is toxic to cells and should be disposed of

properly. Avoid repeated freeze-thaw cycles.

## Clonality

Polyclonal

## Ig Type

Rabbit IgG

## Applications

WB, ELISA, IP

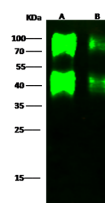
## Dilutions

WB: 0.5-5 µg/ml

ELISA: 0.1-0.2 µg/ml

This antibody can be used at 0.1-0.2 µg/ml with the appropriate secondary reagents to detect Human RSV (B1) glycoprotein G / RSV-G.

## Validations



Items	Lanes	A	B
Sample (Recombinant protein)		S3-RSV-B1-G-His (Cat#13029-V08H)	
Sample Volume (ng/lane)		20	5
Gel		13%SDS-PAGE reducing gel	
Recommended Concentration		0.5-5 µg/ml	
Secondary Antibody		Dylight 800-labeled Antibody To Rabbit IgG (H+L), at 1:5000 dilution.	
Developed using Odyssey imaging system.			

Human RSV (B1) glycoprotein G / RSV-G Antibody, Rabbit PAb, Antigen Affinity Purified, Western blot