

# Integrin alpha 6X1A-Specific antibody



Catalog Number: 111855

## Product name

Integrin alpha 6X1A-Specific antibody

## Specificity

Human, Mouse; other species not tested.

## Antibody description

Integrin alpha 6X1A-Specific Rabbit Polyclonal antibody. Positive WB detected in mouse spleen tissue, mouse colon tissue. Observed molecular weight by Western-blot: 100 kDa, 150 kDa

## Preparation

This antibody was obtained by immunization of Peptide (Accession Number: NM\_000210). Purification method: Antigen affinity purified.

## Formulation

PBS with 0.02% sodium azide and 50% glycerol pH 7.3.

## Storage

Store at -20°C. DO NOT ALIQUOT

## Clonality

Polyclonal

## Ig Type

Rabbit IgG

## Applications

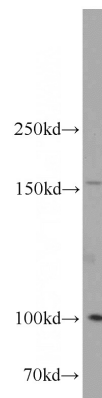
ELISA, WB

## Dilutions

Recommended Dilution:

WB: 1:200-1:1000

## Validations



mouse spleen tissue were subjected to SDS PAGE followed by western blot with Catalog No:111855(ITGA6-Specific antibody) at dilution of 1:300