

# Human SRC/Proto-oncogene c-Src (His & GST Tag) recombinant protein



Catalog Number: 501855

## General Information

### Gene Name Synonym

Proto-oncogene c-Src; pp60c-src

### Protein Construction

A DNA sequence encoding the human SRC (P12931-1) (Met 1-Leu 536) was fused with the N-terminal polyhistidine-tagged GST tag at the N-terminus.

### Organism

Human

### Expression Host

Baculovirus-Insect Cells

## QC Testing

### Activity

The specific activity was determined to be 27 nmol/min/mg using Poly(Glu:Tyr) 4:1 as substrate.

### Purity

> 90 % as determined by SDS-PAGE

### Endotoxin

< 1.0 EU per  $\mu\text{g}$  of the protein as determined by the LAL method

### Stability

Samples are stable for up to twelve months from date of receipt at  $-70^{\circ}\text{C}$

### Predicted N terminal

Met

### Molecular Mass

The recombinant human SRC/GST chimera consists of 773 amino acids and has a calculated molecular mass of 87.7 KDa. It migrates as an approximately 81 KDa band in SDS-PAGE under non-reduced conditions.

### Formulation

Supplied as sterile 50mM Tris, 100mM NaCl, pH 8.0, 20% gly, 0.3mM DTT  
1. 5 % trehalose and mannitol are added as protectants before lyophilization.  
2. Please contact us for any concerns or special requirements.

## Usage Guide

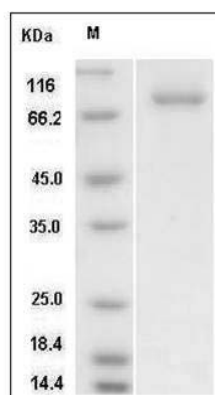
### Storage

Store it under sterile conditions at  $-20^{\circ}\text{C}$  to  $-80^{\circ}\text{C}$ . It is recommended that the protein be aliquoted for optimal storage. Avoid repeated freeze-thaw cycles.

### Reconstitution

Adding sterile water, prepare a stock solution of 0.25 mg/ml. Concentration is measured by UV-Vis.

### SDS-PAGE



Human SRC Kinase / Proto-oncogene c-Src Protein (His & GST Tag) SDS-PAGE