

EMD Polyclonal Antibody



Catalog Number: 161855

Product name

EMD Polyclonal Antibody

Specificity

Human, Mouse

Antibody description

Polyclonal antibody to EMD

Preparation

Antigen: Recombinant fusion protein containing a sequence corresponding to amino acids 1-220 of human EMD (NP_000108.1).

Formulation

PBS with 0.02% sodium azide, 50% glycerol, pH7.3.

Storage

Store at -20°C. Avoid freeze / thaw cycles.

Clonality

Polyclonal

Ig Type

Rabbit IgG

Applications

WB, IHC, IF

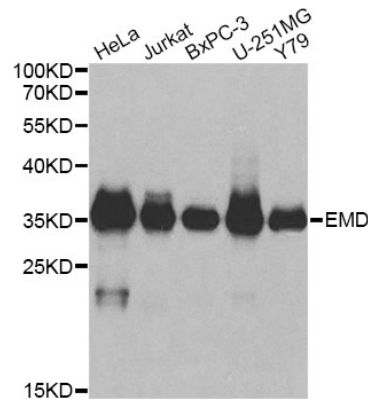
Dilutions

WB 1:500 - 1:2000

IHC 1:50 - 1:200

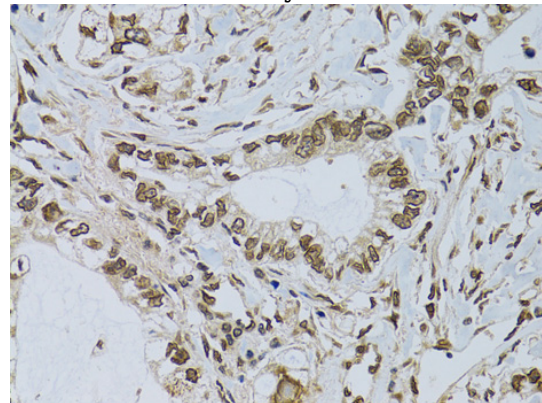
IF 1:50 - 1:200

Validations



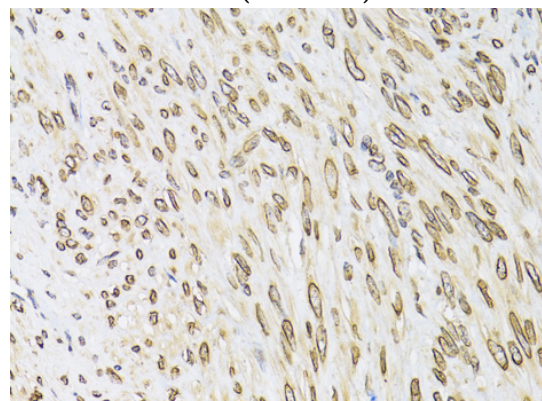
Western blot - EMD Polyclonal Antibody

Western blot analysis of extracts of various cell lines, using EMD antibody at 1:1000 dilution. Secondary antibody: HRP Goat Anti-Rabbit IgG (H+L) at 1:10000 dilution. Lysates/proteins: 25ug per lane. Blocking buffer: 3% nonfat dry milk in TBST.



Immunohistochemistry - EMD Polyclonal Antibody

Immunohistochemistry of paraffin-embedded human gastric cancer using EMD antibody at dilution of 1:100 (40x lens).



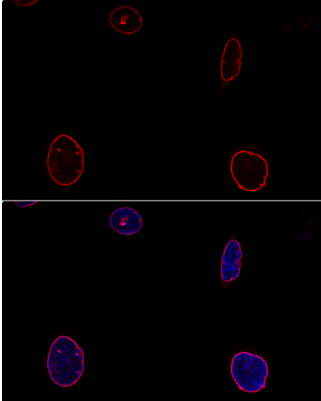
EMD Polyclonal Antibody



Catalog Number: 161855

Immunohistochemistry - EMD Polyclonal Antibody

Immunohistochemistry of paraffin-embedded human uterine cancer using EMD antibody at dilution of 1:100 (40x lens).



Immunofluorescence - EMD Polyclonal Antibody

Confocal immunofluorescence analysis of U-2OS cells using EMD antibody at dilution of 1:100. Blue: DAPI for nuclear staining.