

Anti-GCGR antibody



Catalog Number: 175455

Product name

Anti-GCGR antibody

IHC-P:1:400-800

FC:1µg/Test

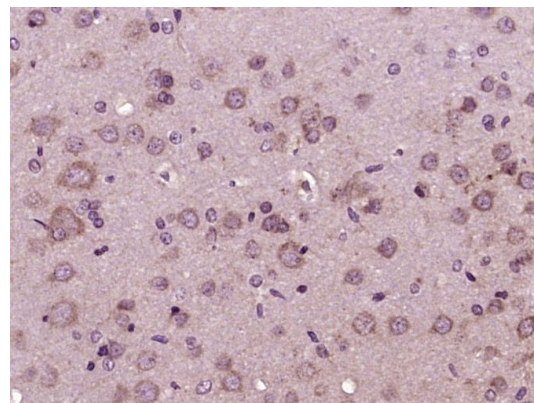
Specificity

Human, Mouse, Rat, Chicken, Dog, Pig, Cow, Guinea Pig

Validations

Antibody description

Rabbit polyclonal antibody to GCGR



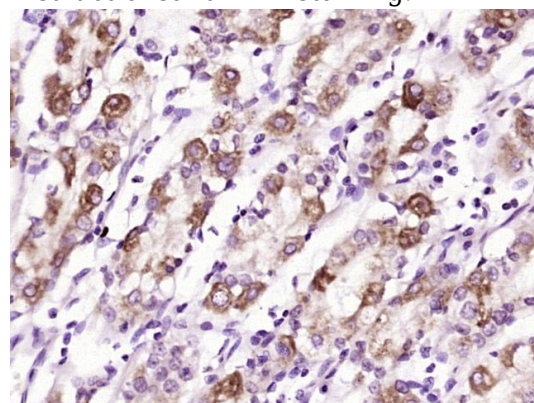
Preparation

This antigen of this antibody was klh conjugated synthetic peptide derived from human glucagon receptor 11-110/477

Fig1: Paraformaldehyde-fixed, paraffin embedded (rat brain tissue); Antigen retrieval by boiling in sodium citrate buffer (pH6.0) for 15min; Block endogenous peroxidase by 3% hydrogen peroxide for 20 minutes; Blocking buffer (normal goat serum) at 37°C for 30min; Antibody incubation with (Glucagon Receptor) Polyclonal Antibody, Unconjugated at 1:400 overnight at 4°C, followed by operating according to SP Kit(Rabbit) (sp-0023) instructions and DAB staining.

Formulation

Liquid, 0.01M TBS(pH7.4) with 1% BSA, 0.03% Proclin300 and 50% Glycerol.



Storage

Store at -20°C for one year. Avoid repeated freeze/thaw cycles. The lyophilized antibody is stable at room temperature for at least one month and for greater than a year when kept at -20°C. When reconstituted in sterile pH 7.4 0.01M PBS or diluent of antibody the antibody is stable for at least two weeks at 2-4°C.

Clonality

Polyclonal

Ig Type

Rabbit IgG

Applications

WB, IHC-P, FC

Dilutions

WB:1:500-2000

Fig2: Paraformaldehyde-fixed, paraffin embedded (human stomach tissue); Antigen retrieval by boiling in sodium citrate buffer (pH6.0) for 15min; Block endogenous peroxidase by 3% hydrogen peroxide for 20 minutes; Blocking buffer (normal goat serum) at 37°C for 30min; Antibody incubation with (Glucagon Receptor) Polyclonal Antibody, Unconjugated at 1:400 overnight at 4°C, followed by operating according to SP Kit(Rabbit)

(sp-0023) instructions and DAB staining.

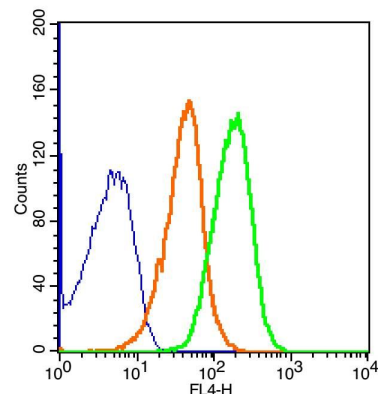


Fig3: Blank control(blue): Molt-4 Cells(fixed with 2% paraformaldehyde (10 min)).; Primary Antibody: Rabbit Anti-Glucagon Receptor/AF647 Conjugated antibody (175455#/AF647), Dilution: 1µg in 100 µL 1X PBS containing 0.5% BSA;; Isotype Control Antibody: Rabbit IgG/AF647(orange) ,used under the same

conditions.

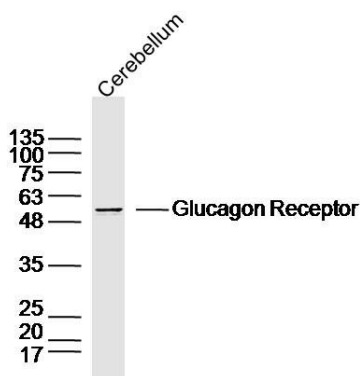


Fig4: Sample: Cerebellum (Mouse) Lysate at 40 ug; Primary: Anti-Glucagon Receptor at 1/300 dilution; Secondary: IRDye800CW Goat Anti-Rabbit IgG at 1/20000 dilution; Predicted band size: 51 kD; Observed band size: 51 kD

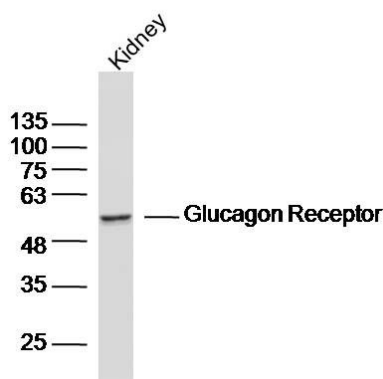


Fig5: Sample:Kidney (Mouse) Lysate at 40 ug; Primary: Anti-Glucagon Receptor at 1/300 dilution; Secondary: IRDye800CW Goat Anti-Rabbit IgG at 1/20000 dilution; Predicted band size: 51kD; Observed band size: 51kD