

# Anti-SerpinB1/ELANH2 antibody



Catalog Number: 104455

## Product name

Anti-SerpinB1/ELANH2 antibody

## Immunogen

[Human SerpinB1/ELANH2 \(His Tag\) recombinant protein](#)

## Specificity

Human SerpinB1 / ELANH2

## Antibody description

Mouse monoclonal to SerpinB1/ELANH2

## Preparation

This antibody was produced from a hybridoma resulting from the fusion of a mouse myeloma with B cells obtained from a mouse immunized with purified, recombinant Human SerpinB1 / ELANH2 (rh SerpinB1 / ELANH2; P30740; Met1-Pro379). The IgG fraction of the cell culture supernatant was purified by Protein A affinity chromatography.

## Formulation

0.2 µm filtered solution in PBS with 5% trehalose

## Storage

This antibody can be stored at 2°C-8°C for one month without detectable loss of activity. Antibody products are stable for twelve months from date of receipt when stored at -20°C to -80°C.

Preservative-Free.

Sodium azide is recommended to avoid contamination (final concentration 0.05%-0.1%). It is toxic to cells and should be disposed of properly. Avoid repeated freeze-thaw cycles.

## Clonality

Monoclonal

## Ig Type

Mouse IgG1

## Applications

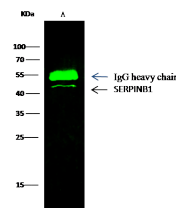
WB, IP

## Dilutions

WB: 5-10 µg/mL

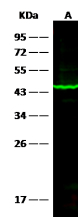
IP: 4-10 µg/mg of lysate

## Validations



Items	Lanes	A
Sample (whole cell lysate)		293T
Sample quantity		0.5 mg
IP antibody quantity		2 µg
Protein G agarose		15 µl of 50% Protein G Agarose
Gel		13% SDS-PAGE reducing gel
Primary antibody		SerpinB1 antibody at 10 µg/ml [Cat# 12588-M005]
Secondary antibody		Dylight 800-labeled antibody to mouse IgG (H+L), at 1:7500 dilution.

SerpinB1 / ELANH2 Antibody, Mouse MAb,



Items	Lanes	A
Sample (whole cell lysate)		NCI-H460
Sample Volume (µg/lane)		30
Gel		13% SDS-PAGE reducing gel
Recommended Concentration		5-10 µg/ml
Secondary Antibody		Dylight 800-labeled Antibody To Mouse IgG (H+L), at 1:7500 dilution.

## Immunoprecipitation

SerpinB1 / ELANH2 Antibody, Mouse MAb,  
Western blot