

# Anti-PRDM2/RIZ1 antibody



Catalog Number: 102455

## Product name

Anti-PRDM2/RIZ1 antibody

## Immunogen

[Human PRDM2/RIZ1 \(GST Tag\) recombinant protein](#)

## Specificity

Human PRDM2 / KMT8

## Antibody description

Rabbit polyclonal to PRDM2/RIZ1

## Preparation

Produced in rabbits immunized with purified, recombinant Human PRDM2 (rh PRDM2; NP\_036363.2; Met 1-Ala 200). PRDM2 specific IgG was purified by human PRDM2 affinity chromatography

## Formulation

0.2 µm filtered solution in PBS with 5% trehalose

## Storage

This antibody can be stored at 2°C-8°C for one month without detectable loss of activity. Antibody products are stable for twelve months from date of receipt when stored at -20°C to -80°C. Preservative-Free.

Sodium azide is recommended to avoid contamination (final concentration 0.05%-0.1%). It is toxic to cells and should be disposed of properly. Avoid repeated freeze-thaw cycles.

## Clonality

Polyclonal

## Ig Type

Rabbit IgG

## Applications

ELISA, IHC-P

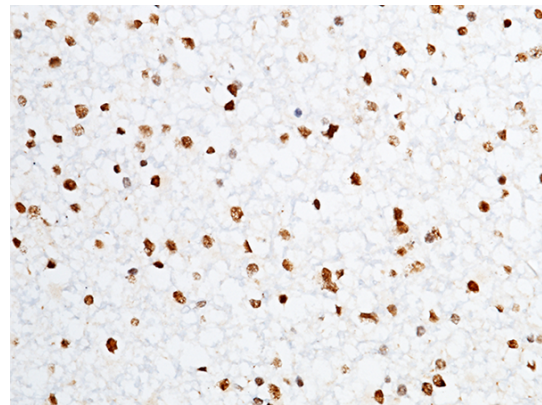
## Dilutions

ELISA: 0.5-1 µg/mL

This antibody can be used at 0.5-1 µg/mL with the appropriate secondary reagents to detect Human PRDM2. The detection limit for Human PRDM2 is 0.00975 ng/well.

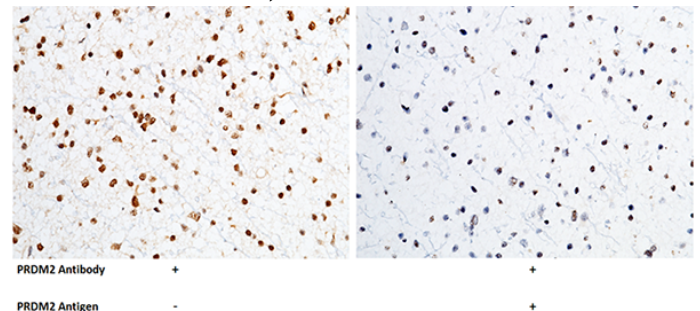
IHC-P: 0.1-2 µg/mL

## Validations



PRDM2 / RIZ1 Antibody, Rabbit PAb, Antigen Affinity Purified, Immunohistochemistry

Immunochemical staining of human PRDM2 in human astrocytoma with rabbit polyclonal antibody (1 µg/mL, formalin-fixed paraffin embedded sections).



PRDM2 / RIZ1 Antibody, Rabbit PAb, Antigen Affinity Purified, Immunohistochemistry

Immunochemical staining of human PRDM2 in

# Anti-PRDM2/RIZ1 antibody



Catalog Number: 102455

---

human glioblastoma with rabbit polyclonal antibody (1  $\mu\text{g}/\text{mL}$ , formalin-fixed paraffin embedded sections). The left panel: tissue

incubated with primary antibody; The right panel: tissue incubated with the mixture of primary antibody and antigen (recombinant protein).