

Annexin A2 antibody



Catalog Number: 107055

Product name

Annexin A2 antibody

Specificity

Human, Mouse; other species not tested.

Antibody description

Annexin A2 Mouse Monoclonal antibody. Positive WB detected in K-562 cells, HEK-293 cells, HeLa cells. Positive IP detected in HeLa cells. Positive FC detected in HeLa cells. Positive IHC detected in human breast cancer tissue, human gliomas tissue. Positive IF detected in MCF-7 cells, HeLa cells. Observed molecular weight by Western-blot: 35-38 kDa

Preparation

This antibody was obtained by immunization of Annexin A2 recombinant protein (Accession Number: XM_017022090). Purification method: Caprylic Acid/Ammonium Sulfate Precipitation.

Formulation

PBS with 0.1% sodium azide and 50% glycerol pH 7.3.

Storage

Store at -20°C. DO NOT ALIQUOT

Clonality

Monoclonal

Ig Type

Mouse IgG2b

Applications

ELISA, WB, IHC, IP, FC, IF

Dilutions

Recommended Dilution:

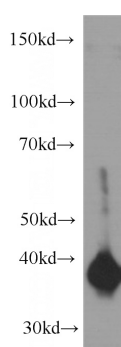
WB: 1:500-1:5000

IP: 1:500-1:5000

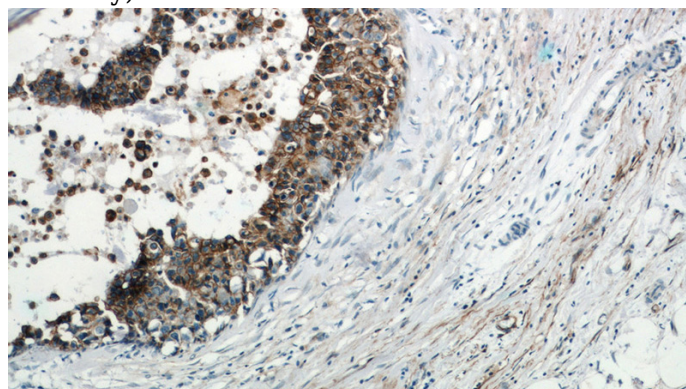
IHC: 1:20-1:200

IF: 1:50-1:500

Validations



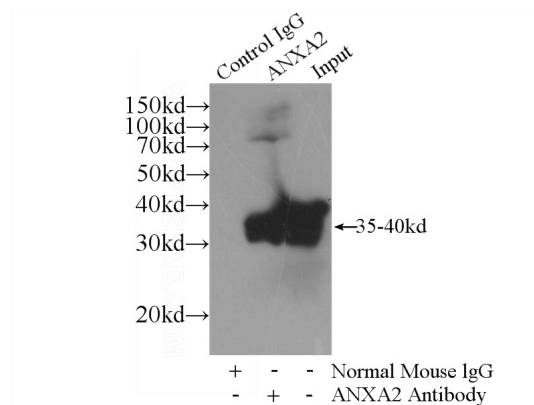
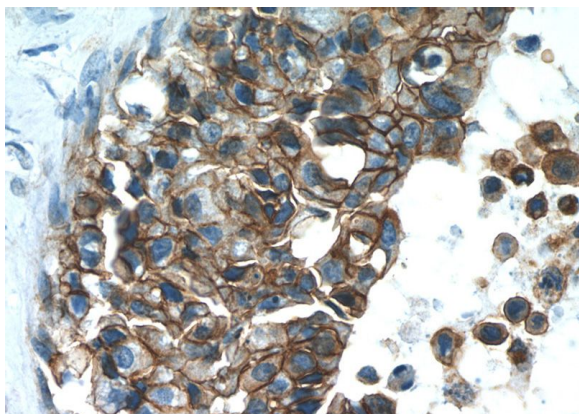
K-562 cells were subjected to SDS PAGE followed by western blot with Catalog No:107055(ANXA2 antibody) at dilution of 1:1000



Immunohistochemistry of paraffin-embedded human breast cancer slide using Catalog No:107055(ANXA2 Antibody) at dilution of 1:50

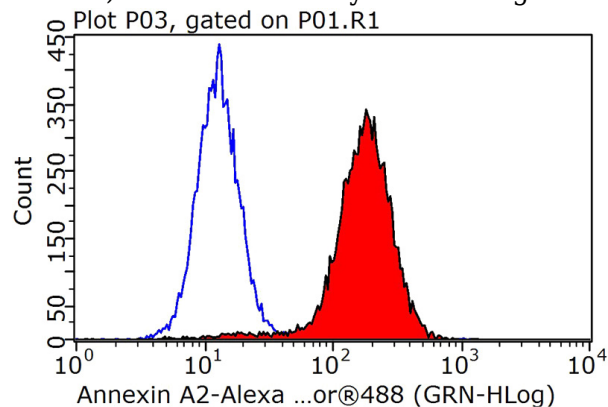
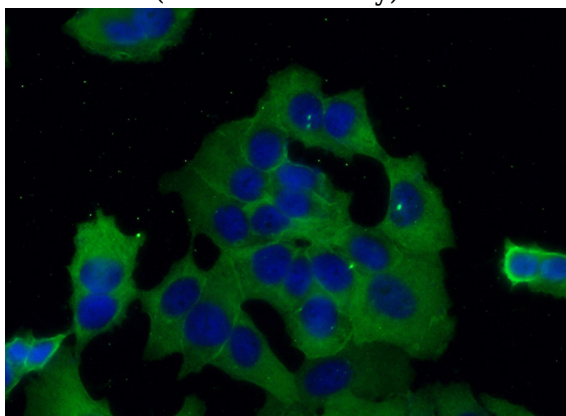
Annexin A2 antibody

Catalog Number: 107055



Immunohistochemistry of paraffin-embedded human breast cancer slide using Catalog No:107055(ANXA2 Antibody) at dilution of 1:50

IP Result of anti-Annexin A2 (IP:Catalog No:107055, 4ug; Detection:Catalog No:107055 1:1500) with HeLa cells lysate 2400ug.



Immunofluorescent analysis of (-20oc Ethanol) fixed MCF-7 cells using Catalog No:107055(Annexin A2 Antibody) at dilution of 1:50 and Alexa Fluor 488-conjugated AffiniPure Goat Anti-Mouse IgG(H+L)

1×10^6 HeLa cells were stained with 0.2ug Annexin A2 antibody (Catalog No:107055, red) and control antibody (blue). Fixed with 90% MeOH blocked with 3% BSA (30 min). Alexa Fluor 488-conjugated AffiniPure Goat Anti-Mouse IgG(H+L) with dilution 1:1000.