

# SAMD9L antibody



Catalog Number: 115055

## Product name

SAMD9L antibody

IHC: 1:20-1:200

IF: 1:20-1:200

## Specificity

Human; other species not tested.

## Antibody description

SAMD9L Rabbit Polyclonal antibody. Positive WB detected in COLO 320 cells. Positive IHC detected in human breast cancer tissue, human brain tissue, human colon cancer tissue. Positive IF detected in COLO 320 cells. Observed molecular weight by Western-blot: 160-180 kDa

## Preparation

This antibody was obtained by immunization of SAMD9L recombinant protein (Accession Number: BC127118). Purification method: Antigen affinity purified.

## Formulation

PBS with 0.1% sodium azide and 50% glycerol pH 7.3.

## Storage

Store at -20°C. DO NOT ALIQUOT

## Clonality

Polyclonal

## Ig Type

Rabbit IgG

## Applications

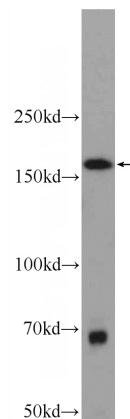
ELISA, IHC, WB, IF

## Dilutions

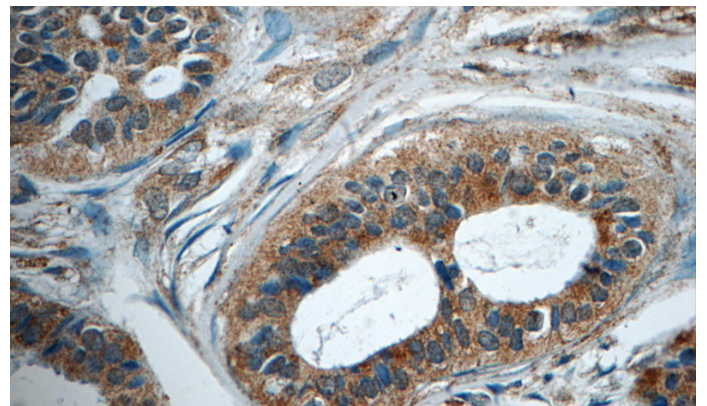
Recommended Dilution:

WB: 1:500-1:5000

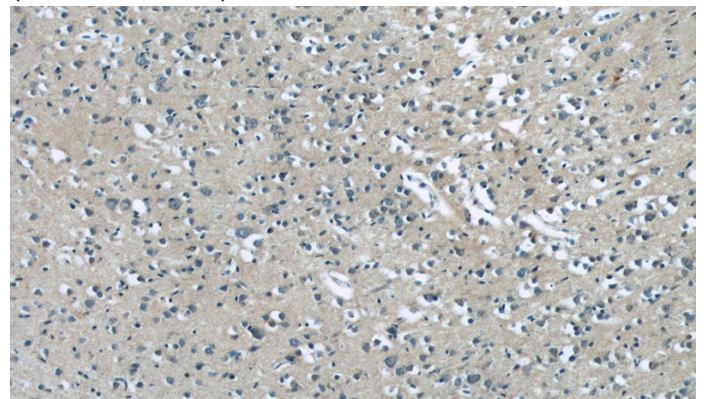
## Validations



COLO 320 cells were subjected to SDS PAGE followed by western blot with Catalog No:115055(SAMD9L Antibody) at dilution of 1:1000



Immunohistochemistry of paraffin-embedded human breast cancer tissue slide using Catalog No:115055(SAMD9L Antibody) at dilution of 1:50 (under 40x lens)



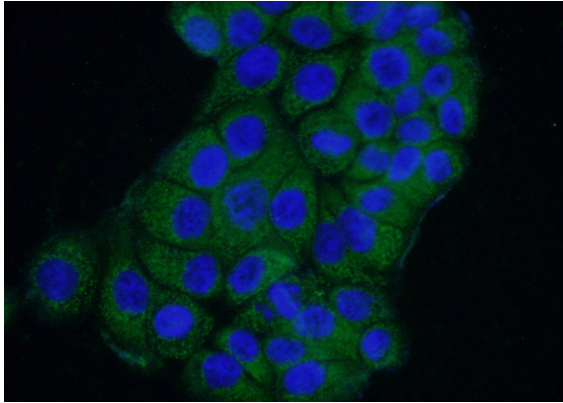
# SAMD9L antibody



Catalog Number: 115055

---

Immunohistochemistry of paraffin-embedded human brain tissue slide using Catalog No:115055(SAMD9L Antibody) at dilution of 1:50 (under 10x lens)



Immunofluorescent analysis of (-20oc Ethanol) fixed COLO 320 cells using Catalog No:115055(SAMD9L Antibody) at dilution of 1:50 and Alexa Fluor 488-conjugated AffiniPure Goat Anti-Rabbit IgG(H+L)