

# Polycystin 2 antibody

Catalog Number: 114055

## Product name

Polycystin 2 antibody

IP: 1:200-1:2000

IHC: 1:20-1:200

## Specificity

Human, Mouse, Rat; other species not tested.

## Antibody description

Polycystin 2 Rabbit Polyclonal antibody. Positive IHC detected in human kidney tissue. Positive WB detected in human kidney tissue, HEK-293 cells. Positive IP detected in mouse testis tissue, HeLa cells. Observed molecular weight by Western-blot: 109 kDa

## Preparation

This antibody was obtained by immunization of Peptide (Accession Number: NM\_000297). Purification method: Antigen affinity purified.

## Formulation

PBS with 0.02% sodium azide and 50% glycerol pH 7.3.

## Storage

Store at -20°C. DO NOT ALIQUOT

## Clonality

Polyclonal

## Ig Type

Rabbit IgG

## Applications

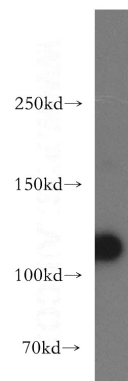
ELISA, WB, IP, IHC

## Dilutions

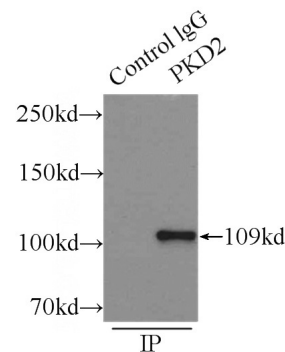
Recommended Dilution:

WB: 1:200-1:1000

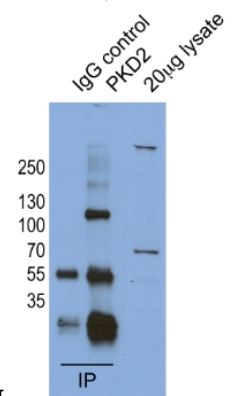
## Validations



human kidney tissue were subjected to SDS PAGE followed by western blot with Catalog No:114055(PKD2 antibody) at dilution of 1:300



IP Result of anti-PKD2 (IP:Catalog No:114055, 3ug; Detection:Catalog No:114055 1:500) with



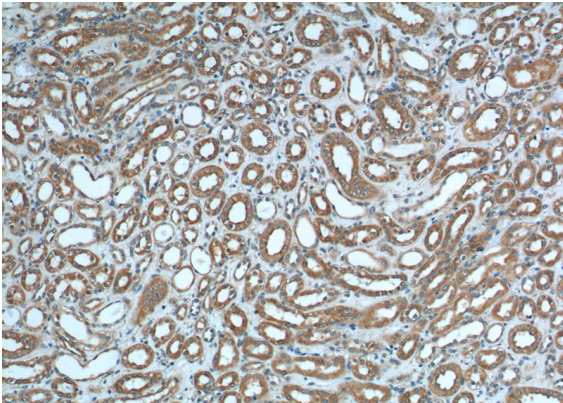
mouse testis tissue lysate 8000ug.

IP result of anti-PKD2 (Catalog No:114055 for IP and Detection) with HeLa cell lysate.

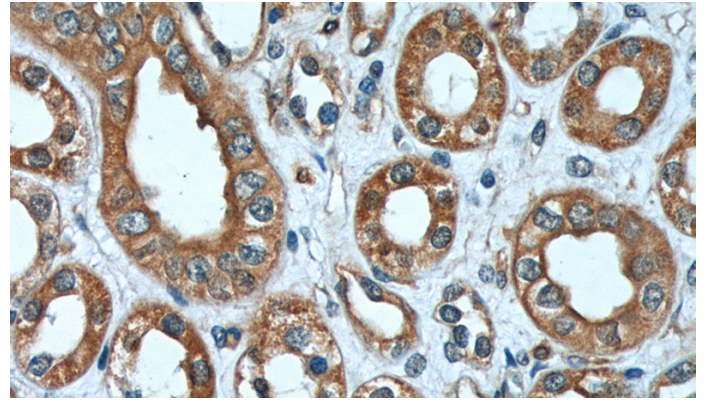
# Polycystin 2 antibody

Catalog Number: 114055

---



Immunohistochemistry of paraffin-embedded human kidney tissue slide using Catalog No:114055(PKD2 Antibody) at dilution of 1:200 (under 10x lens).



Immunohistochemistry of paraffin-embedded human kidney tissue slide using Catalog No:114055(PKD2 Antibody) at dilution of 1:200 (under 40x lens).