

# KIN antibody

Catalog Number: 112055

---

## Product name

KIN antibody

## Specificity

human, mouse, rat; other species not tested.

## Antibody description

KIN Rabbit Polyclonal antibody. Positive WB detected in mouse testis tissue, HeLa cells, human heart tissue. Observed molecular weight by Western-blot: 45kd

## Preparation

This antibody was obtained by immunization of KIN recombinant protein (Accession Number: NM\_012311). Purification method: Antigen affinity purified.

## Formulation

PBS with 0.1% sodium azide and 50% glycerol pH 7.3.

## Storage

Store at -20°C. DO NOT ALIQUOT

## Clonality

Polyclonal

## Ig Type

Rabbit IgG

## Applications

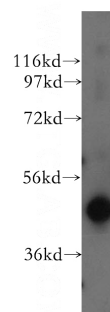
ELISA, WB

## Dilutions

Recommended Dilution:

WB: 1:1000-1:10000

## Validations



mouse testis tissue were subjected to SDS PAGE followed by western blot with Catalog No:112055(KIN antibody) at dilution of 1:500