

CUL4A-Specific antibody

Catalog Number: 109745

Product name

CUL4A-Specific antibody

IHC: 1:20-1:200

IF: 1:20-1:200

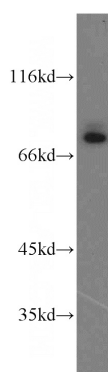
Specificity

Human, Mouse, Rat; other species not tested.

Antibody description

CUL4A-Specific Rabbit Polyclonal antibody. Positive WB detected in HeLa cells, HL-60 cells, Jurkat cells, mouse thymus tissue. Positive IF detected in HepG2 cells. Positive IHC detected in human liver cancer tissue. Observed molecular weight by Western-blot: 88 kDa, 77 kDa

Validations



Preparation

This antibody was obtained by immunization of Peptide (Accession Number: NM_003589). Purification method: Antigen affinity purified.

HeLa cells were subjected to SDS PAGE followed by western blot with Catalog No:109745(CUL4A-Specific antibody) at dilution of 1:500

Formulation

PBS with 0.02% sodium azide and 50% glycerol pH 7.3.

Storage

Store at -20°C. DO NOT ALIQUOT

Clonality

Polyclonal

Ig Type

Rabbit IgG

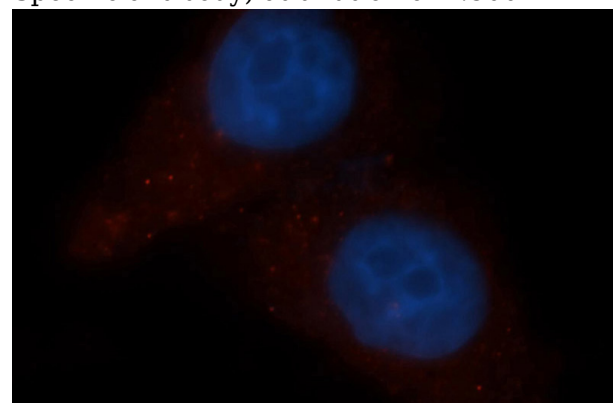
Applications

ELISA, IF, WB, IHC

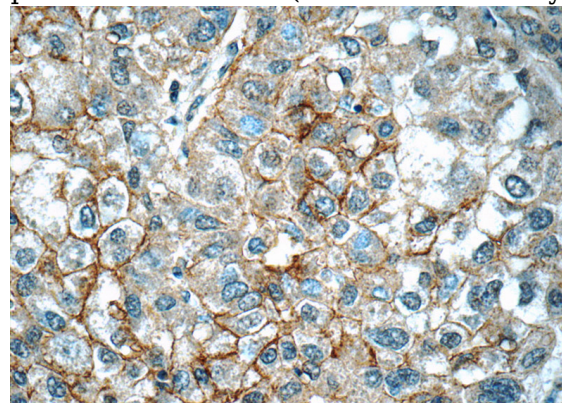
Dilutions

Recommended Dilution:

WB: 1:200-1:2000



Immunofluorescent analysis of HepG2 cells, using CUL4A antibody Catalog No: at 1:50 dilution and Rhodamine-labeled goat anti-rabbit IgG (red). Blue pseudocolor = DAPI (fluorescent DNA dye).



Immunohistochemistry of paraffin-embedded

CUL4A-Specific antibody



Catalog Number: 109745

human liver cancer tissue slide using Catalog

No:109745(CUL4A-Specific Antibody) at dilution
of 1:50 (under 40x lens)