

CA13 antibody

Catalog Number: 108745

Product name

CA13 antibody

WB: 1:500-1:5000

IHC: 1:20-1:200

Specificity

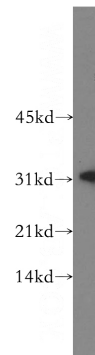
Human, Mouse, Rat; other species not tested.

IF: 1:50-1:500

Antibody description

CA13 Rabbit Polyclonal antibody. Positive WB detected in NIH/3T3 cells, mouse skeletal muscle tissue. Positive IF detected in NIH/3T3 cells. Positive IHC detected in human placenta tissue, human heart tissue, human kidney tissue, human spleen tissue, human testis tissue. Observed molecular weight by Western-blot: 30 kDa

Validations



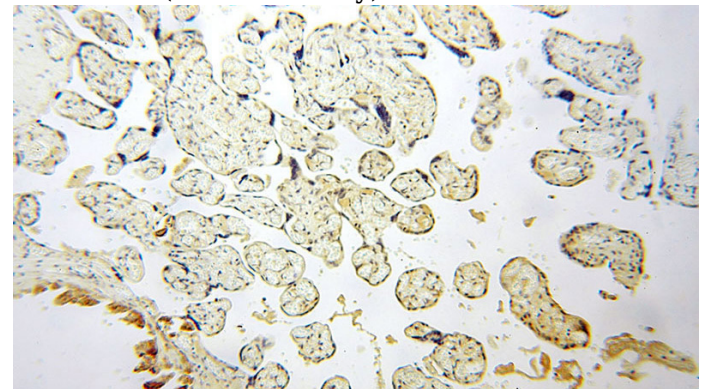
Preparation

This antibody was obtained by immunization of CA13 recombinant protein (Accession Number: NM_198584). Purification method: Antigen affinity purified.

NIH/3T3 cells were subjected to SDS PAGE followed by western blot with Catalog No:108745(CA13 antibody) at dilution of 1:500

Formulation

PBS with 0.02% sodium azide and 50% glycerol pH 7.3.



Storage

Store at -20°C. DO NOT ALIQUOT

Clonality

Polyclonal

Ig Type

Rabbit IgG

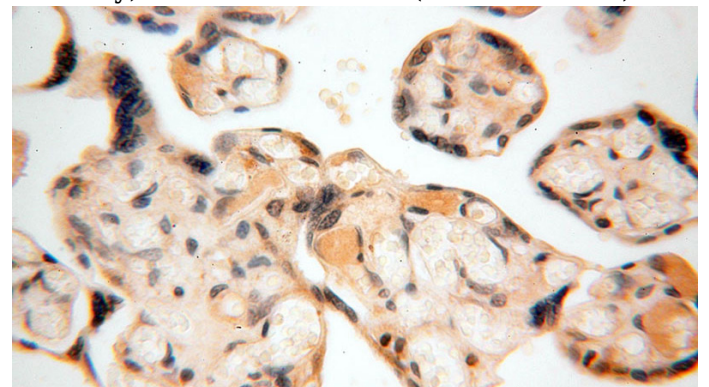
Applications

ELISA, WB, IHC, IF

Dilutions

Recommended Dilution:

Immunohistochemical of paraffin-embedded human placenta using Catalog No:108745(CA13 antibody) at dilution of 1:100 (under 10x lens)

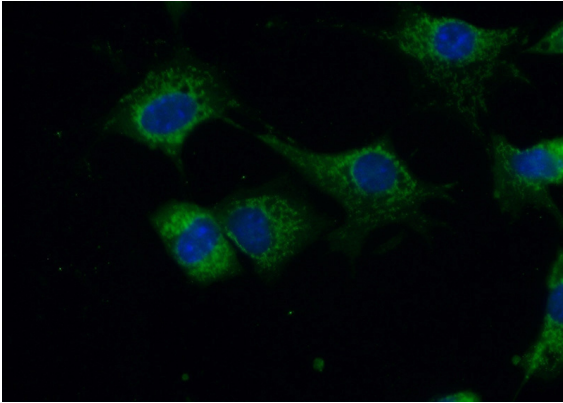


Immunohistochemical of paraffin-embedded

CA13 antibody

Catalog Number: 108745

human placenta using Catalog No:108745(CA13 antibody) at dilution of 1:100 (under 40x lens)



Immunofluorescent analysis of (10% Formaldehyde) fixed NIH/3T3 cells using Catalog No:108745(CA13 Antibody) at dilution of 1:50 and Alexa Fluor 488-conjugated AffiniPure Goat Anti-Rabbit IgG(H+L)