

Anti-VAX1 antibody

Catalog Number: 175745

Product name

Anti-VAX1 antibody

Specificity

Human, Mouse, Rat, Chicken, Dog, Pig, Cow

Antibody description

Rabbit polyclonal antibody to VAX1

Preparation

This antigen of this antibody was klh conjugated synthetic peptide derived from human vax1 133-200/334

Formulation

Liquid, 0.01M TBS(pH7.4) with 1% BSA, 0.03% Proclin300 and 50% Glycerol.

Storage

Store at -20°C for one year. Avoid repeated freeze/thaw cycles. The lyophilized antibody is stable at room temperature for at least one month and for greater than a year when kept at -20°C. When reconstituted in sterile pH 7.4 0.01M PBS or diluent of antibody the antibody is stable for at least two weeks at 2-4°C.

Clonality

Polyclonal

Ig Type

Rabbit IgG

Applications

WB, FC

Dilutions

WB:1:500-2000

FC:0.2µg/Test

Validations

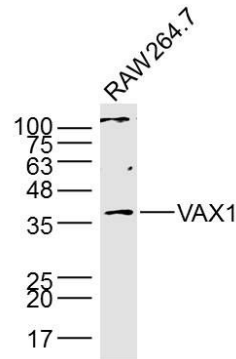
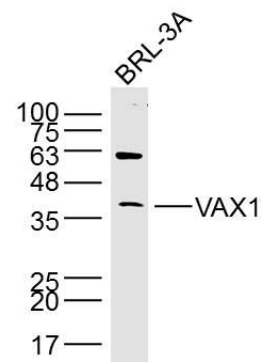
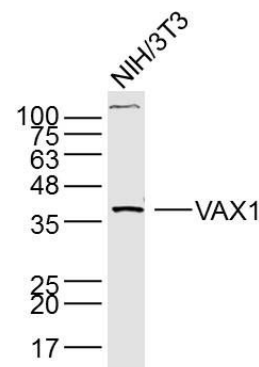


Fig1: Sample: RAW264.7 Cell (Mouse) Lysate at 40 ug; Primary: Anti- VAX1 at 1/300 dilution; Secondary: IRDye800CW Goat Anti-Rabbit IgG at 1/20000 dilution; Predicted band size: 35 kD;



Observed band size: 37 kD

Fig2: Sample: BRL-3A Cell (Rat) Lysate at 40 ug; Primary: Anti- VAX1 at 1/300 dilution; Secondary: IRDye800CW Goat Anti-Rabbit IgG at 1/20000 dilution; Predicted band size: 35 kD; Observed



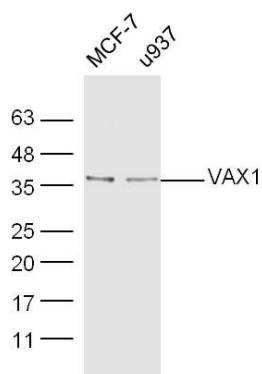
band size: 37 kD

Fig3: Sample: NIH/3T3 Cell (Mouse) Lysate at 40 ug; Primary: Anti- VAX1 at 1/300 dilution; Secondary: IRDye800CW Goat Anti-Rabbit IgG at

Anti-VAX1 antibody

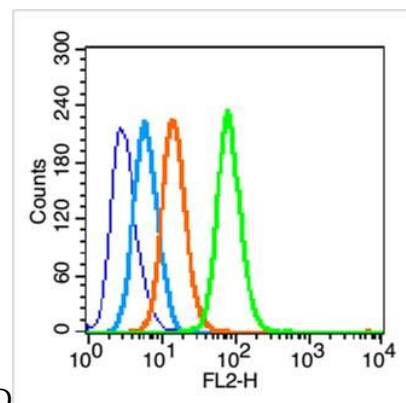
Catalog Number: 175745

1/20000 dilution; Predicted band size: 35 kD;



Observed band size: 37 kD

Fig4: Sample:; MCF-7 Cell (Human) Lysate at 40 ug; U937 Cell (Human) Lysate at 40 ug; Primary: Anti-VAX1 at 1/300 dilution; Secondary: IRDye800CW Goat Anti-Rabbit IgG at 1/20000 dilution; Predicted band size: 35 kD; Observed



band size: 36 kD

Fig5: Blank control (blue line): Hep G2 (fixed with 70% ethanol (Overnight at 4°C) and then permeabilized with 90% methanol for 20 min at -20°C).; Primary Antibody (green line): Rabbit Anti-VAX1 antibody ,Dilution: 0.2µg /10⁶ cells;; Isotype Control Antibody (orange line): Rabbit IgG .; Secondary Antibody (white blue line): Goat anti-rabbit IgG-PE,Dilution: 1µg /test.