

# ATP1B2 antibody



Catalog Number: 108345

## Product name

ATP1B2 antibody

WB: 1:500-1:5000

IP: 1:500-1:5000

## Specificity

Human, Mouse, Rat; other species not tested.

IHC: 1:20-1:200

## Antibody description

ATP1B2 Rabbit Polyclonal antibody. Positive IHC detected in human brain tissue. Positive WB detected in mouse brain tissue, human brain tissue, mouse skeletal muscle tissue. Positive IP detected in mouse skeletal muscle tissue. Observed molecular weight by Western-blot: 45-65 kDa

## Preparation

This antibody was obtained by immunization of ATP1B2 recombinant protein (Accession Number: NM\_001678). Purification method: Antigen affinity purified.

## Formulation

PBS with 0.02% sodium azide and 50% glycerol pH 7.3.

## Storage

Store at -20°C. DO NOT ALIQUOT

## Clonality

Polyclonal

## Ig Type

Rabbit IgG

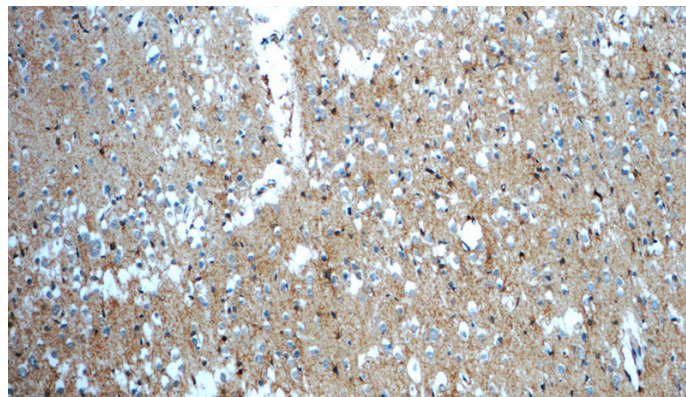
## Applications

ELISA, IHC, WB, IP

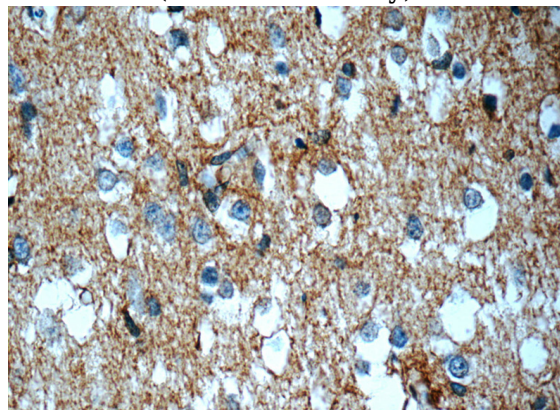
## Dilutions

Recommended Dilution:

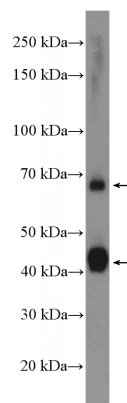
## Validations



Immunohistochemistry of paraffin-embedded human brain slide using Catalog No:108345(ATP1B2 Antibody) at dilution of 1:50



Immunohistochemistry of paraffin-embedded human brain slide using Catalog No:108345(ATP1B2 Antibody) at dilution of 1:50



# ATP1B2 antibody

Catalog Number: 108345

---

mouse brain tissue were subjected to SDS PAGE followed by western blot with Catalog No:108345(ATP1B2 Antibody) at dilution of

IP Result of anti-ATP1B2 (IP:Catalog No:108345, 4ug; Detection:Catalog No:108345 1:1000) with mouse skeletal muscle tissue lysate 4000ug.

