

Anti-PINCH (3C12) Mouse antibody



Catalog Number: 168345

Product name

Anti-PINCH (3C12) Mouse antibody

Specificity

Human

Antibody description

PINCH (3C12) Mouse monoclonal antibody

Preparation

Antigen: Purified recombinant fragment of human PINCH expressed in E. Coli.

Formulation

Ascitic fluid containing 0.03% sodium azide.

Storage

Store at 4°C short term. Store at -20°C long term. Avoid freeze / thaw cycle.

Clonality

Monoclonal

Ig Type

Mouse IgG1

Applications

WB, ICC/IF, FC, IP

Dilutions

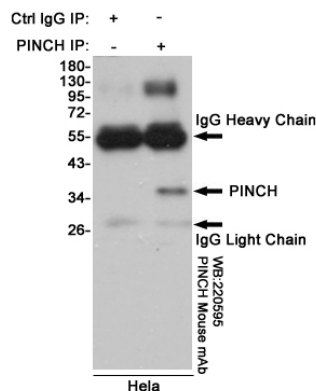
WB: 1/500 - 1/2000

ICC: 1/200 - 1/1000

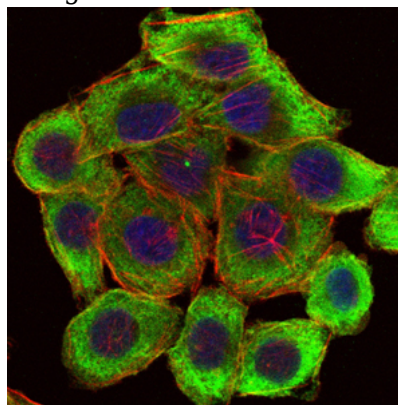
FC: 1/200 - 1/400

ELISA: 1/10000

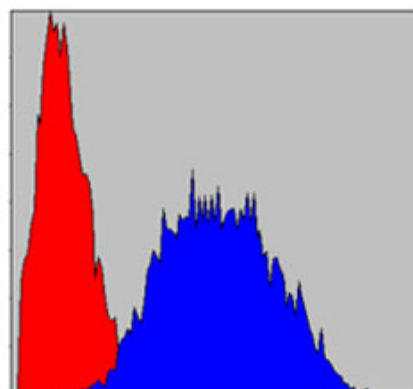
Validations



Immunoprecipitation analysis of HeLa cell lysates using PINCH mouse mAb.



Immunofluorescence analysis of HepG2 cells using PINCH mouse mAb (green). Blue



Flow cytometric analysis of HeLa cells using PINCH mouse mAb (blue) and negative control

Anti-PINCH (3C12) Mouse antibody



Catalog Number: 168345

Western blot detection of PINCH in C6, Jurkat, K562, 3T3 and HeLa cell lysates using PINCH mouse mAb (1:1000 diluted). Predicted band size: 37KDa. Observed band size: 35KDa.

