

OLR1 antibody

Catalog Number: 113345

Product name

OLR1 antibody

IP: 1:200-1:2000

IHC: 1:50-1:500

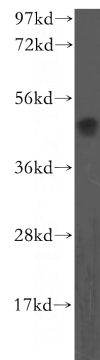
Specificity

Human; other species not tested.

Validations

Antibody description

OLR1 Rabbit Polyclonal antibody. Positive IHC detected in human heart tissue. Positive FC detected in HUVEC cells. Positive WB detected in human liver tissue. Positive IP detected in L02 cells. Observed molecular weight by Western-blot: 48-52 kDa



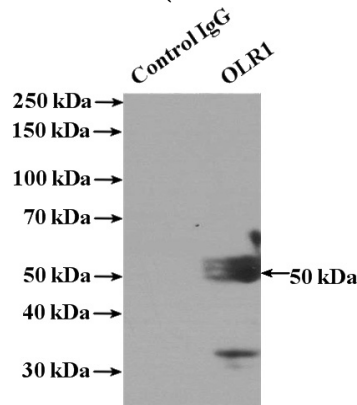
Preparation

This antibody was obtained by immunization of OLR1 recombinant protein (Accession Number: NM_002543). Purification method: Antigen affinity purified.

human liver tissue were subjected to SDS PAGE followed by western blot with Catalog No:113345(OLR1 antibody) at dilution of 1:500

Formulation

PBS with 0.1% sodium azide and 50% glycerol pH 7.3.



Storage

Store at -20°C. DO NOT ALIQUOT

Clonality

Polyclonal

IP Result of anti-OLR1 (IP:Catalog No:113345, 4ug; Detection:Catalog No:113345 1:800) with L02 cells lysate 1800ug.

Ig Type

Rabbit IgG

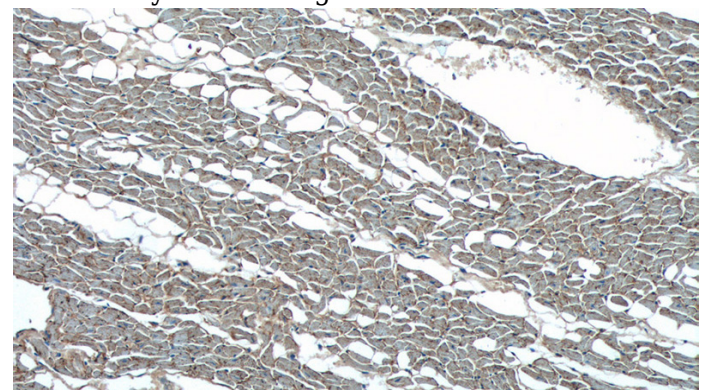
Applications

ELISA, WB, FC, IP, IHC

Dilutions

Recommended Dilution:

WB: 1:200-1:2000

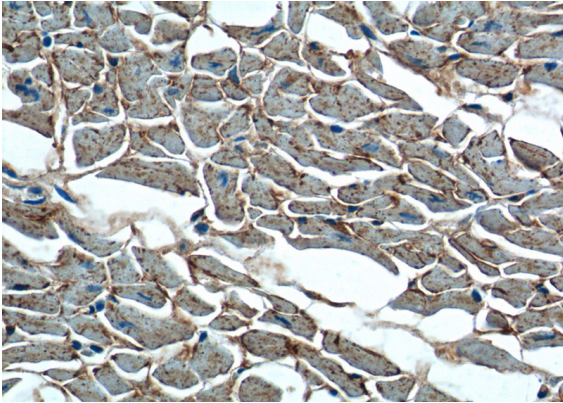



Immunohistochemistry of paraffin-embedded human heart tissue slide using Catalog

OLR1 antibody

Catalog Number: 113345

No:113345(OLR1 Antibody) at dilution of 1:200
(under 10x lens).



Immunohistochemistry of paraffin-embedded
human heart tissue slide using Catalog
No:113345(OLR1 Antibody) at dilution of 1:200
(under 40x lens). 

1×10^6 HUVEC cells were stained with 0.2ug
OLR1 antibody (Catalog No:113345, red) and
control antibody (blue). Fixed with 4% PFA
blocked with 3% BSA (30 min). Alexa Fluor 488-
conjugated AffiniPure Goat Anti-Rabbit IgG(H+L)
with dilution 1:1500.