

# LSM1 antibody

Catalog Number: 112345

## Product name

LSM1 antibody

IP: 1:200-1:1000

IHC: 1:20-1:200

## Specificity

Human, Mouse, Rat; other species not tested.

## Antibody description

LSM1 Rabbit Polyclonal antibody. Positive IHC detected in human prostate cancer tissue. Positive IP detected in HeLa cells. Positive WB detected in HeLa cells, mouse kidney tissue. Observed molecular weight by Western-blot: 18-20 kDa

## Preparation

This antibody was obtained by immunization of LSM1 recombinant protein (Accession Number: NM\_014462). Purification method: Antigen affinity purified.

## Formulation

PBS with 0.1% sodium azide and 50% glycerol pH 7.3.

## Storage

Store at -20°C. DO NOT ALIQUOT

## Clonality

Polyclonal

## Ig Type

Rabbit IgG

## Applications

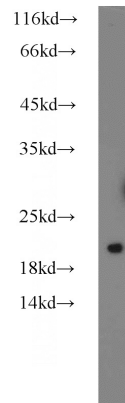
ELISA, IHC, WB, IP

## Dilutions

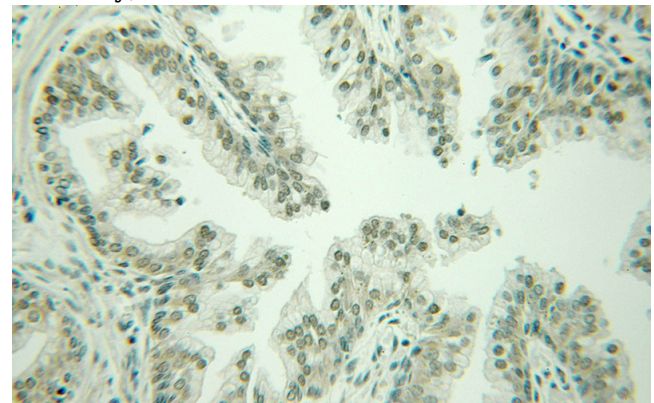
Recommended Dilution:

WB: 1:200-1:2000

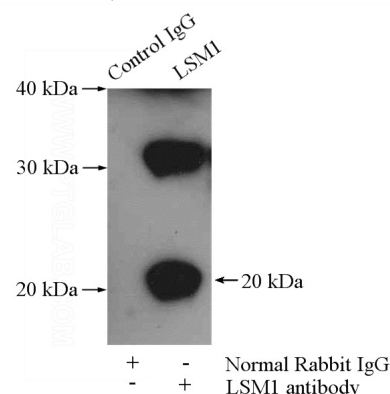
## Validations



HeLa cells were subjected to SDS PAGE followed by western blot with Catalog No:112345(LSM1 antibody) at dilution of 1:600



Immunohistochemical of paraffin-embedded human prostate cancer using Catalog No:112345(LSM1 antibody) at dilution of 1:100 (under 10x lens)



IP Result of anti-LSM1 (IP:Catalog No:112345,

# LSM1 antibody



Catalog Number: 112345

---

4ug; Detection:Catalog No:112345 1:300) with HeLa cells lysate 2000ug.