

Human BCL2L12 / BCL2-like 12 (GST Tag) recombinant protein



Catalog Number: 502345

General Information

Gene Name Synonym

Bcl-2-related proline-rich protein

Protein Construction

A DNA sequence encoding the human BCL2L12 (Q9HB09-1) (Pro147-Lys227) was fused with the GST tag at the N-terminus.

Organism

Human

Expression Host

E. coli

QC Testing

Purity

> 95 % as determined by SDS-PAGE

Endotoxin

Please contact us for more information.

Stability

Samples are stable for up to twelve months from date of receipt at -70°C

Predicted N terminal

Met

Molecular Mass

The recombinant human BCL2L12/GST chimera consists of 314 amino acids and has a predicted

molecular mass of 36 kDa. It migrates as an approximately 33 kDa band in SDS-PAGE under reducing conditions.

Formulation

Lyophilized from sterile PBS, pH 8.0.

1. 5 % trehalose and mannitol are added as protectants before lyophilization.

2. Please contact us for any concerns or special requirements.

Usage Guide

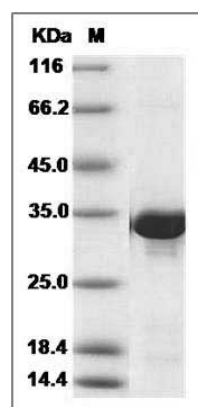
Storage

Store it under sterile conditions at -20°C to -80°C. It is recommended that the protein be aliquoted for optimal storage. Avoid repeated freeze-thaw cycles.

Reconstitution

Adding sterile water, prepare a stock solution of 0.25 mg/ml. Concentration is measured by UV-Vis.

SDS-PAGE



Human BCL2L12 / BCL2-like 12 Protein (GST Tag)
SDS-PAGE