

Anti-CALML3 antibody



Catalog Number: 100345

Product name

Anti-CALML3 antibody

Immunogen

[Human CALML3 \(His Tag\) recombinant protein](#)

Specificity

Human CALML3

Antibody description

Rabbit polyclonal to CALML3

Preparation

Produced in rabbits immunized with purified, recombinant Human CALML3 (rh CALML3; P27482; Met1-Lys149). CALML3 specific IgG was purified by Human CALML3 affinity chromatography.

Formulation

0.2 µm filtered solution in PBS with 5% trehalose

Storage

This antibody can be stored at 2°C-8°C for one month without detectable loss of activity. Antibody products are stable for twelve months from date of receipt when stored at -20°C to -80°C.

Preservative-Free.

Sodium azide is recommended to avoid contamination (final concentration 0.05%-0.1%). It is toxic to cells and should be disposed of properly. Avoid repeated freeze-thaw cycles.

Clonality

Polyclonal

Ig Type

Rabbit IgG

Applications

ELISA, WB, IHC-P, IP

Dilutions

WB: 1-2 µg/ml

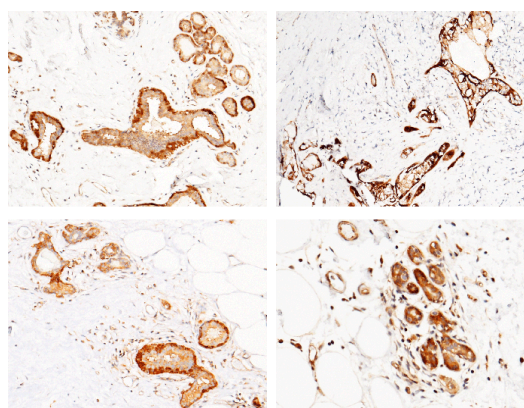
ELISA: 0.1-0.2 µg/mL

This antibody can be used at 0.1-0.2 µg/mL with the appropriate secondary reagents to detect Human CALML3. The detection limit for Human CALML3 is approximately 0.00245 ng/well.

IHC-P: 0.1-2 µg/mL

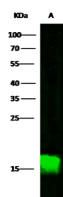
IP: 4-6 µg/mg of lysate

Validations



CALML3 Antibody, Rabbit PAb, Antigen Affinity Purified, Immunohistochemistry

Immunochemical staining of human CALML3 in human breast carcinoma (from 4 donors) with rabbit polyclonal antibody (1 µg/mL, formalin-fixed paraffin embedded sections).



Items	Lanes	A
Sample (whole cell lysate)		A431
Sample Volume (µg/lane)		30
Gel		13% SDS-PAGE reducing gel
Recommended Concentration		1-2 µg/ml
Secondary Antibody		Dylight 800-labeled Antibody To Rabbit IgG (H+L), at 1:5000 dilution.

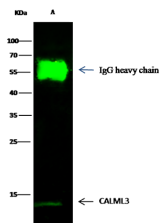
Anti-CALML3 antibody



Catalog Number: 100345

CALML3 Antibody, Rabbit PAb, Antigen Affinity Purified, Western blot

CALML3 Antibody, Rabbit PAb, Antigen Affinity Purified



Items	A
Sample (whole cell lysate)	A431
Sample quantity	0.5 mg
IP antibody quantity	2 µg
Protein G agarose	15 µl of 50% Protein G Agarose
Gel	13% SDS-PAGE reducing gel
Primary antibody	CALML3 antibody at 1 µg/ml [Cat# 12480-RP02]
Secondary antibody	Dylight 800-labeled antibody to rabbit IgG (H+L), at 1:5000 dilution.