

# RPL5 Polyclonal Antibody



Catalog Number: 163645

## Product name

RPL5 Polyclonal Antibody

## Specificity

Human, Mouse, Rat

## Antibody description

Polyclonal antibody to RPL5

## Preparation

Antigen: Recombinant fusion protein containing a sequence corresponding to amino acids 1-95 of human RPL5 (NP\_000960.2).

## Formulation

PBS with 0.02% sodium azide, 50% glycerol, pH7.3.

## Storage

Store at -20°C. Avoid freeze / thaw cycles.

## Clonality

Polyclonal

## Ig Type

Rabbit IgG

## Applications

WB, IHC, IF

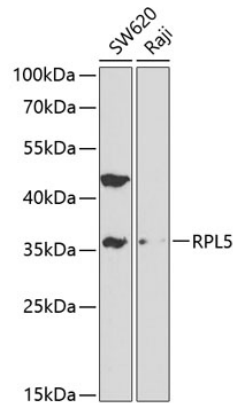
## Dilutions

WB 1:500 - 1:2000

IHC 1:50 - 1:200

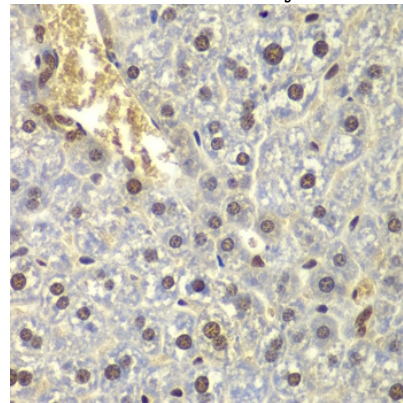
IF 1:50 - 1:200

## Validations



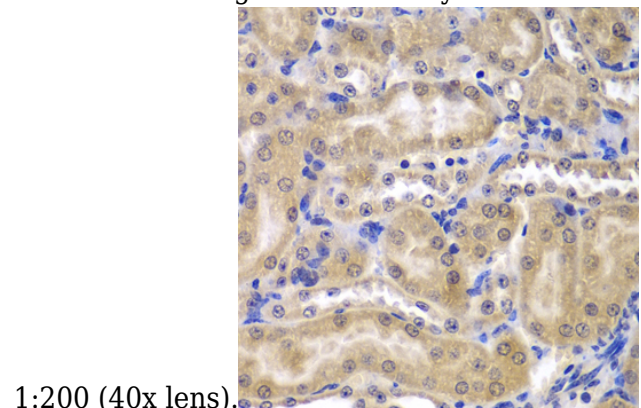
Western blot - RPL5 Polyclonal Antibody

Western blot analysis of extracts of various cell lines, using RPL5 antibody at 1:1000 dilution. Secondary antibody: HRP Goat Anti-Rabbit IgG (H+L) at 1:10000 dilution. Lysates/proteins: 25ug per lane. Blocking buffer: 3% nonfat dry milk in TBST.



Immunohistochemistry - RPL5 Polyclonal Antibody

Immunohistochemistry of paraffin-embedded mouse liver using RPL5 antibody at dilution of



1:200 (40x lens).

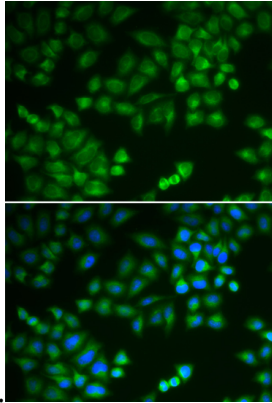
Immunohistochemistry - RPL5 Polyclonal Antibody

# RPL5 Polyclonal Antibody

Catalog Number: 163645

---

Immunohistochemistry of paraffin-embedded mouse kidney using RPL5 antibody at dilution of



1:200 (40x lens).

Immunofluorescence - RPL5 Polyclonal Antibody

Immunofluorescence analysis of MCF-7 cells using RPL5 antibody . Blue: DAPI for nuclear staining.