

# FGL2 antibody

Catalog Number: 110645

## Product name

FGL2 antibody

IHC: 1:20-1:200

IF: 1:10-1:100

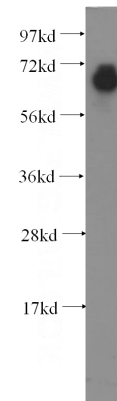
## Specificity

Human, Mouse, Rat; other species not tested.

## Validations

## Antibody description

FGL2 Rabbit Polyclonal antibody. Positive IHC detected in human colon cancer tissue. Positive IF detected in HepG2 cells. Positive WB detected in human ileum tissue, mouse thymus tissue. Observed molecular weight by Western-blot: 70 kDa, 50-60 kDa



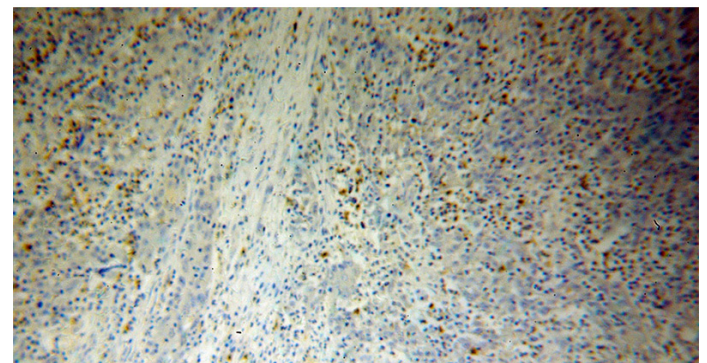
## Preparation

This antibody was obtained by immunization of FGL2 recombinant protein (Accession Number: BC017813). Purification method: Antigen affinity purified.

human ileum tissue were subjected to SDS PAGE followed by western blot with Catalog No:110645(FGL2 antibody) at dilution of 1:400

## Formulation

PBS with 0.1% sodium azide and 50% glycerol pH 7.3.



## Storage

Store at -20°C. DO NOT ALIQUOT

## Clonality

Polyclonal

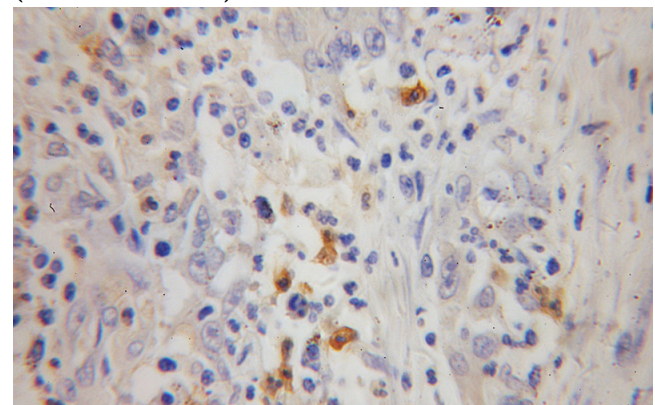
Immunohistochemical of paraffin-embedded human colon cancer using Catalog No:110645(FGL2 antibody) at dilution of 1:50 (under 10x lens)

## Ig Type

Rabbit IgG

## Applications

ELISA, WB, IHC, IF



## Dilutions

Recommended Dilution:

WB: 1:500-1:5000

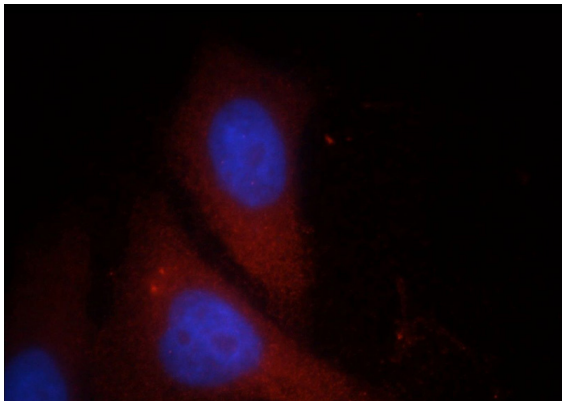
Immunohistochemical of paraffin-embedded

# FGL2 antibody

Catalog Number: 110645

---

human colon cancer using Catalog No:110645(FGL2 antibody) at dilution of 1:50 (under 40x lens)



Immunofluorescent analysis of HepG2 cells, using FGL2 antibody Catalog No:110645 at 1:25 dilution and Rhodamine-labeled goat anti-rabbit IgG (red). Blue pseudocolor = DAPI (fluorescent DNA dye).