

# ECCHS1 antibody

Catalog Number: 107245

## Product name

ECCHS1 antibody

WB: 1:500-1:5000

IP: 1:500-1:5000

## Specificity

Human; other species not tested.

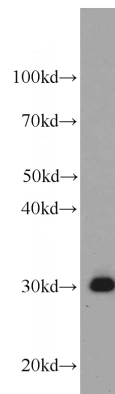
IHC: 1:20-1:200

IF: 1:20-1:200

## Antibody description

ECCHS1 Mouse Monoclonal antibody. Positive IP detected in HepG2 cells. Positive WB detected in HepG2 cells, human testis tissue, PC-3 cells. Positive IHC detected in human liver tissue, human prostate cancer tissue. Positive IF detected in HepG2 cells. Observed molecular weight by Western-blot: 31 kDa

## Validations



## Preparation

This antibody was obtained by immunization of ECCHS1 recombinant protein (Accession Number: NM\_004092). Purification method: Protein A purified.

HepG2 cells were subjected to SDS PAGE followed by western blot with Catalog No:107245(ECCHS1 antibody) at dilution of 1:1000

## Formulation

PBS with 0.02% sodium azide and 50% glycerol pH 7.3.

## Storage

Store at -20°C. DO NOT ALIQUOT

## Clonality

Monoclonal

## Ig Type

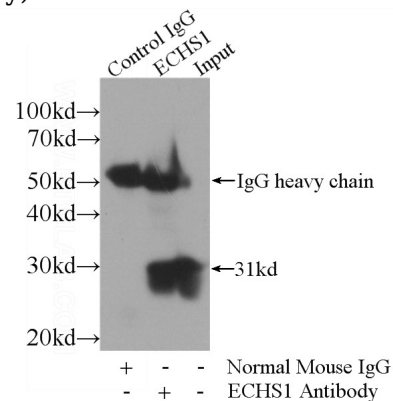
Mouse IgG2b

## Applications

ELISA, WB, IHC, IP, IF

## Dilutions

Recommended Dilution:

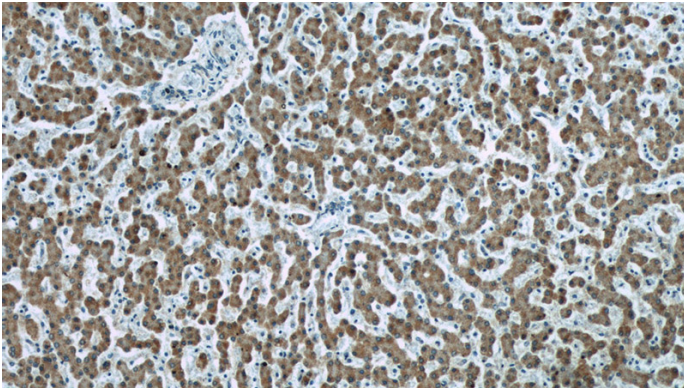


IP Result of anti-ECCHS1 (IP:Catalog No:107245, 3ug; Detection:Catalog No:107245 1:1000) with HepG2 cells lysate 3600ug.

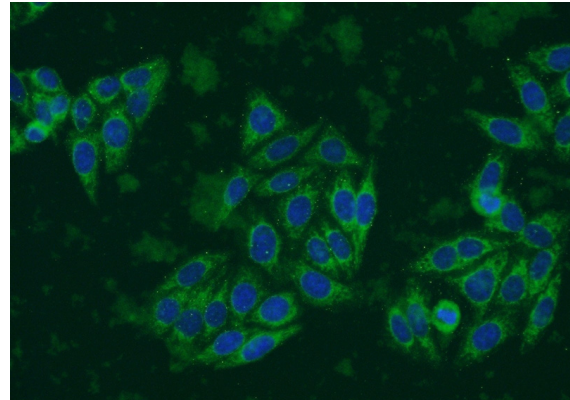
# ECHS1 antibody

Catalog Number: 107245

---



Immunohistochemistry of paraffin-embedded human liver tissue slide using Catalog No:107245(ECHS1 Antibody) at dilution of 1:50



Immunofluorescent analysis of HepG2 cells using Catalog No:107245(ECHS1 Antibody) at dilution of 1:50 and Alexa Fluor 488-conjugated AffiniPure Goat Anti-Mouse IgG(H+L)