

# PSMD7 antibody



Catalog Number: 114245

## Product name

PSMD7 antibody

Recommended Dilution:

WB: 1:500-1:5000

## Immunogen

[Human PSMD7 Recombinant protein \(GST tag\)](#)

IP: 1:200-1:2000

IF: 1:10-1:100

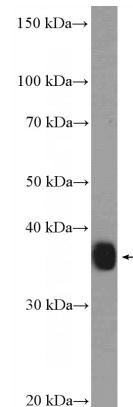
## Specificity

Human, Mouse; other species not tested.

## Validations

## Antibody description

PSMD7 Rabbit Polyclonal antibody. Positive WB detected in mouse liver tissue, HeLa cells, human liver tissue. Positive IP detected in K-562 cells. Positive FC detected in HepG2 cells. Positive IF detected in HepG2 cells. Observed molecular weight by Western-blot: 37kd



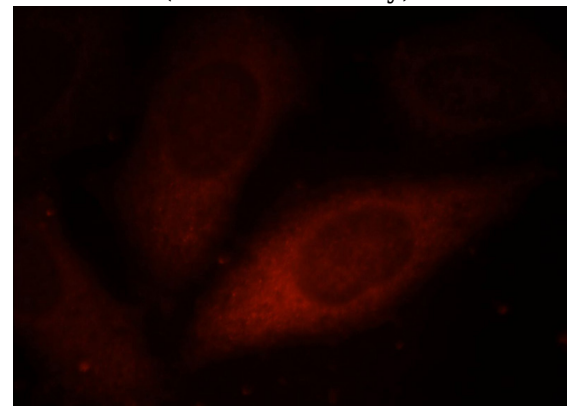
## Preparation

This antibody was obtained by immunization of PSMD7 recombinant protein (Accession Number: NM\_002811). Purification method: Antigen affinity purified.

mouse liver tissue were subjected to SDS PAGE followed by western blot with Catalog No:114245(PSMD7 Antibody) at dilution of 1:1200

## Formulation

PBS with 0.02% sodium azide and 50% glycerol pH 7.3.



## Storage

Store at -20°C. DO NOT ALIQUOT

## Clonality

Polyclonal

Immunofluorescent analysis of HepG2 cells, using PSMD7 antibody Catalog No:114245 at 1:25 dilution and Rhodamine-labeled goat anti-rabbit

## Ig Type

Rabbit IgG

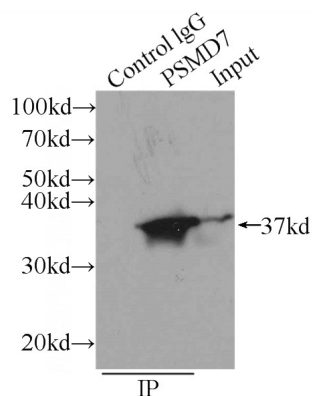
## Applications

ELISA, IF, IP, FC, WB

## Dilutions

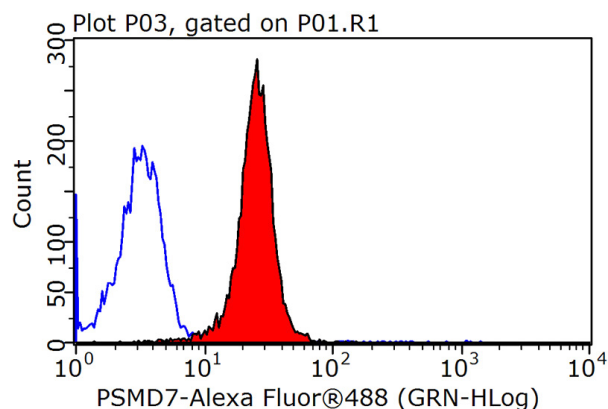
# PSMD7 antibody

Catalog Number: 114245



IgG (red).

IP Result of anti-PSMD7 (IP:Catalog No:114245, 3ug; Detection:Catalog No:114245 1:500) with K-562 cells lysate 2400ug.



1X10<sup>6</sup> HepG2 cells were stained with 0.2ug PSMD7 antibody (Catalog No:114245, red) and control antibody (blue). Fixed with 90% MeOH blocked with 3% BSA (30 min). Alexa Fluor 488-conjugated AffiniPure Goat Anti-Rabbit IgG(H+L) with dilution 1:1500.