

# Liprin alpha 1 antibody



Catalog Number: 112245

## Product name

Liprin alpha 1 antibody

WB: 1:200-1:2000

IP: 1:200-1:2000

## Specificity

Human, Mouse, Rat; other species not tested.

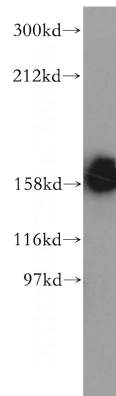
IHC: 1:20-1:200

IF: 1:20-1:200

## Antibody description

Liprin alpha 1 Rabbit Polyclonal antibody. Positive FC detected in HeLa cells. Positive IHC detected in human prostate cancer tissue. Positive IF detected in HepG2 cells. Positive WB detected in HeLa cells, MCF7 cells. Positive IP detected in MCF-7 cells. Observed molecular weight by Western-blot: 160 kDa

## Validations



## Preparation

This antibody was obtained by immunization of Liprin alpha 1 recombinant protein (Accession Number: NM\_003626). Purification method: Antigen affinity purified.

HeLa cells were subjected to SDS PAGE followed by western blot with Catalog No:112245(PPFIA1 antibody) at dilution of 1:500

## Formulation

PBS with 0.02% sodium azide and 50% glycerol pH 7.3.

## Storage

Store at -20°C. DO NOT ALIQUOT

## Clonality

Polyclonal

## Ig Type

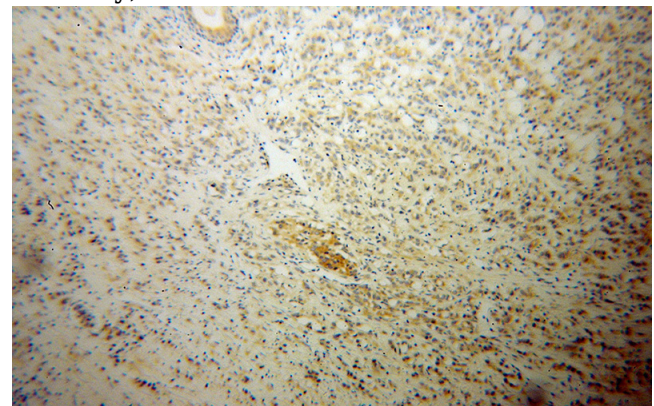
Rabbit IgG

## Applications

ELISA, WB, IHC, IF, IP, FC

## Dilutions

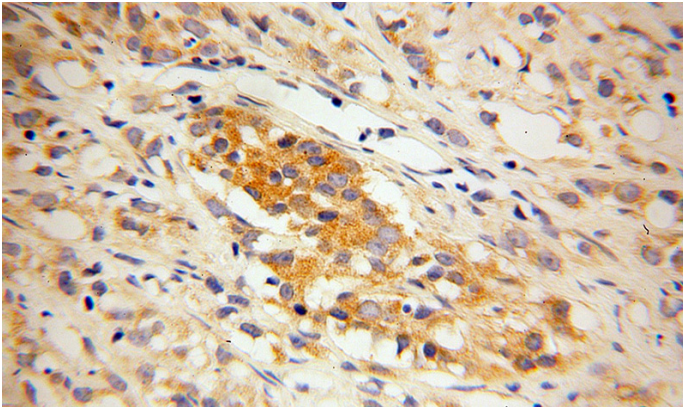
Recommended Dilution:



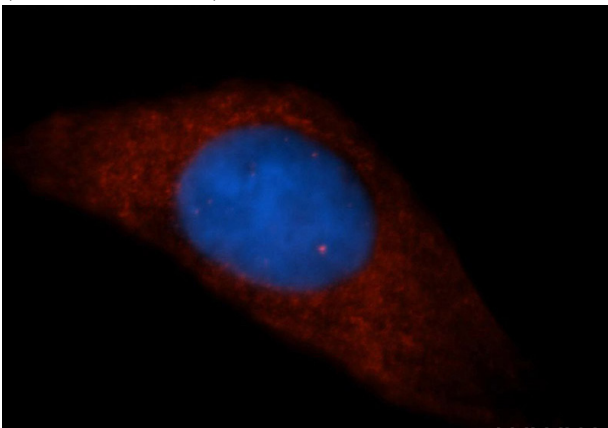
Immunohistochemical of paraffin-embedded human prostate cancer using Catalog No:112245(PPFIA1 antibody) at dilution of 1:100 (under 10x lens)

# Liprin alpha 1 antibody

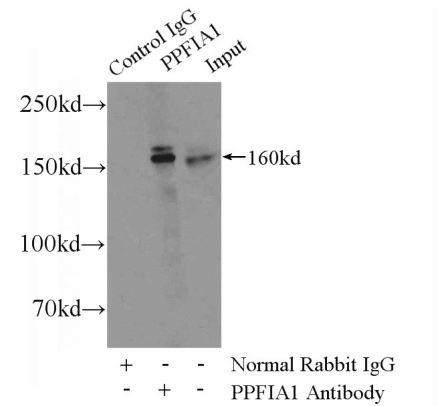
Catalog Number: 112245



Immunohistochemical of paraffin-embedded human prostate cancer using Catalog No:112245(PPFIA1 antibody) at dilution of 1:100 (under 40x lens)

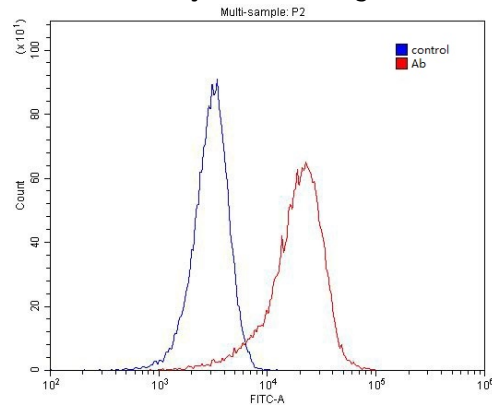


Immunofluorescent analysis of HepG2 cells, using PPFIA1 antibody Catalog No:112245 at 1:50 dilution and Rhodamine-labeled goat anti-rabbit IgG (red). Blue pseudocolor = DAPI (fluorescent



DNA dye).

IP Result of anti-PPFIA1 (IP:Catalog No:112245, 4ug; Detection:Catalog No:112245 1:500) with MCF-7 cells lysate 3200ug.



1X10<sup>6</sup> HeLa cells were stained with 0.2ug PPFIA1 antibody (Catalog No:112245, red) and control antibody (blue). Fixed with 4% PFA blocked with 3% BSA (30 min). Alexa Fluor 488-conjugated AffiniPure Goat Anti-Rabbit IgG(H+L) with dilution 1:1500.