

# Anti-Integrin beta 1 (1G9) Mouse antibody



Catalog Number: 168545

## Product name

Anti-Integrin beta 1 (1G9) Mouse antibody

## Specificity

Human, Monkey

## Antibody description

Integrin beta 1 (1G9) Mouse monoclonal antibody

## Preparation

Antigen: Purified recombinant fragment of human ITGB1 expressed in E. Coli.

## Formulation

Purified antibody in PBS with 0.05% sodium azide

## Storage

Store at 4°C short term. Store at -20°C long term. Avoid freeze / thaw cycle.

## Clonality

Monoclonal

## Ig Type

Mouse IgG1

## Applications

WB, IHC-P, FC

## Dilutions

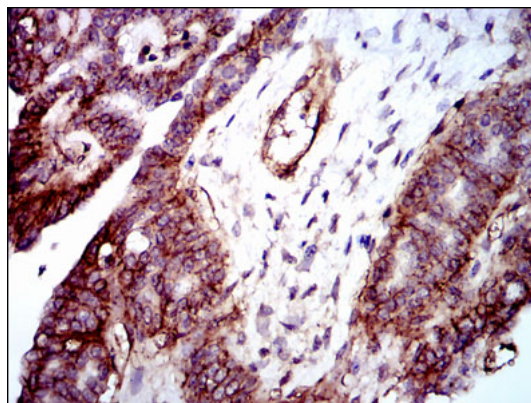
WB: 1/500 - 1/2000

IHC: 1/200 - 1/1000

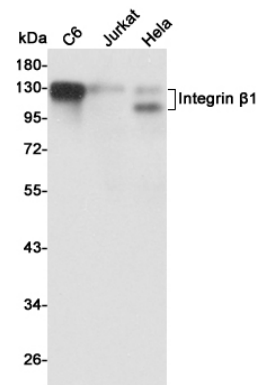
FC: 1/200 - 1/400

ELISA: 1/10000

## Validations

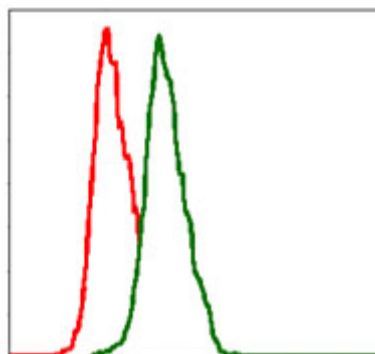


Immunohistochemical analysis of paraffin-embedded ovarian cancer tissues using ITGB1

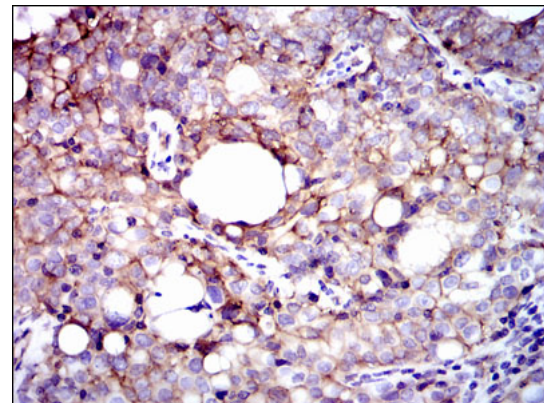
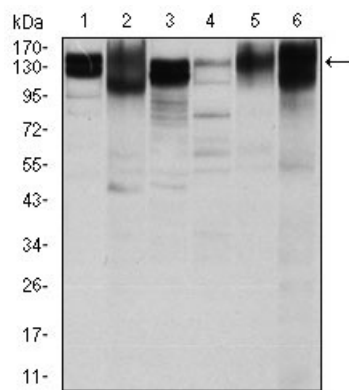


mouse mAb with DAB staining.

Western blot detection of Integrin u03b21 in C6, Jurkat and HeLa cell lysates using Integrin u03b21 mouse mAb (1:1000 diluted). Predicted band size: 88 kDa. Observed band size: 115, 135 kDa.



Flow cytometric analysis of HeLa cells using ITGB1 mouse mAb (green) and negative control (red).



Western blot analysis using ITGB1 mouse mAb against HeLa (1), HepG2 (2), A549 (3), Jurkat(4), L1210 (5) and Cos7 (6) cell lysate.

Immunohistochemical analysis of paraffin-embedded cervical cancer tissues using ITGB1 mouse mAb with DAB staining.